

Dell™ ~~m0pW#N-p0KNm0pW#NpKN G0hW~~

NP

Intel AMT WebGUI - 0 - W

IDE -- 0-€ - \$ N n'''W 0-0K

-L.O. 2-P

[Intel® Active Management Technology –n-a](#)

Intel AMT # n-\$ D, C\$- n n n C\$T

[\(MEBx\) Intel Management Engine BIOS Extension](#)

n-B D<sub>2</sub>O<sub>2</sub>- nne n Wn : n s P T e

$$-\partial \eta - \partial_p \eta - \eta, -\partial_p \eta$$

**.-NLDpZQZQΘΘ°WΘWpN DpZQZWpN Θ-"DpNZWKZQBW "nDpN":nDpN**

[illegible]

~~W~~ ~~a~~ ~~P~~ ~~e~~ ~~n~~ ~~i~~ ~~s~~ ~~p~~, -m~~N~~ s "K N-Pa KCCBW "nə n":nə n ⚠

[illegible]

© 2007 Dell Inc.

[illegible]

CONFIDENTIAL - NRS - WFO Intel Corporation

Microsoft --Microsoft ; Intel Corporation --Intel ; Dell Inc. --Dell ; Dell Computer Corporation --Dell Computer Corporation

.nU6EENPRs02TW-W-Rs02TWRs0KWTG0K0Ks.NmNNU-W Dell Inc.nPRs0WN-a,Wn-Rs0KWTnNU,NON-K),En-2-NT700nm,n'GWTRs0Rs02TW-W-Rs02TWRs0KWTG-W)n,00nm02

Rev. A00 2007 ~~4-00~~



၂၀၁၈-၁၉ နှစ်



# (MEBx) Intel® Management Engine BIOS Extension

Dell™-m,WW-n(CKNn)WWnKNNCnW

- Intel MEBx [C s T](#)
- (ME) Intel Management Engine [N n-ß J, C Os](#)
- Intel AMT -K-mO nm CWN O"WN N n-ß J, C Os
- MEBx N Nn" W C O -nen

## MEBx C s T

-C-Pan .(ME) Management Engine W-PENP n-sP N n-ß J, C Os RsN ,nW-PENPn W O n-ß J, C Os -C-Pa sPTW (MEBx) Intel® Management Engine BIOS Extension -n .NW" mC B --ß nen- -nq- O -K-m N-ek- -Pa -NN-m

.MEBx -ß N ,W C Os ,-NGoW- -C-Pa-n-a Rs C P sPTW n" J, C O, T

RskCm-kp-aNnJ, C OsRsC K n ,T-s MEBx -nRs ,nN .MEBx -W nC C n" aN s ME -n N (NVM) J, C K n n n C Os W K Rn .MEBx -O R C P a R K s ME -n N n-ß n -nenO Rs C K n .ME -n N J, C K n n n C Os W K

## MEBx N n-ß n J, C OsN W W n s W W n n C O

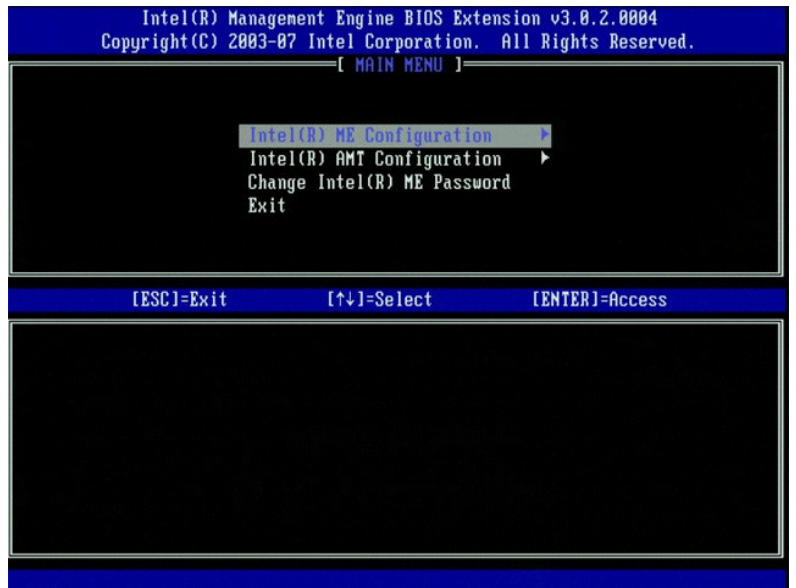
:RsC n RsC n -J, C W O O W O MEBx N n-ß n J, C OsN W W n s W W n n C O n C K

- .O" W n a (n" W W n J, C n -a) N O n
- .<Ctrl><p> N n C W n ,N n n DELL™ -a n J, C W n

.O- nTK- O" W n a n O n ,nW W N .Microsoft® Windows® n N n n n J, C n n -O n n n -J, C P -C n J, C W n C W n ,J, C W n n n n W n -n -J, C W O n n C W n R s

.<Enter> \$ n .ME N n W T C n a n N s n

.nN B W n ,J, C W MEBx -n C W



:-C B s K-P -N N "O W a C B W C n C C n

- Intel ME Configuration |
- Intel AMT Configuration |
- Change Intel ME Password |

.nN Rs C C P C W n N n -C K P n ,nW T C n a -K N C W ,nN C " .RsC n RsC n R s K k Intel AMT Configuration --Intel ME Configuration Rs C C n

## Intel ME N n W T C n C-K

.C n n n n K-m -ß N -C-Pa C-K C K P N N n" W n C O W T C n a -K N C C N J, C .-T P K n J, C n" -W-PENP n N n O n n" a C n - adm n a C n N n" W n C O W T C n

:RsC n RsC n n N n n W n n n J, C

RsC -nK W |



”א ך ך -א 1  
”א תכס -א 1  
PTW 1  
R.שג- , ” :NNNN ; -א , \$ , !NN , (W-KPNN) ת”-W - 1  
..WZn-OnWNRsPT-W R1G ,WZnNRsP-RsR1”- ( ) -” -s

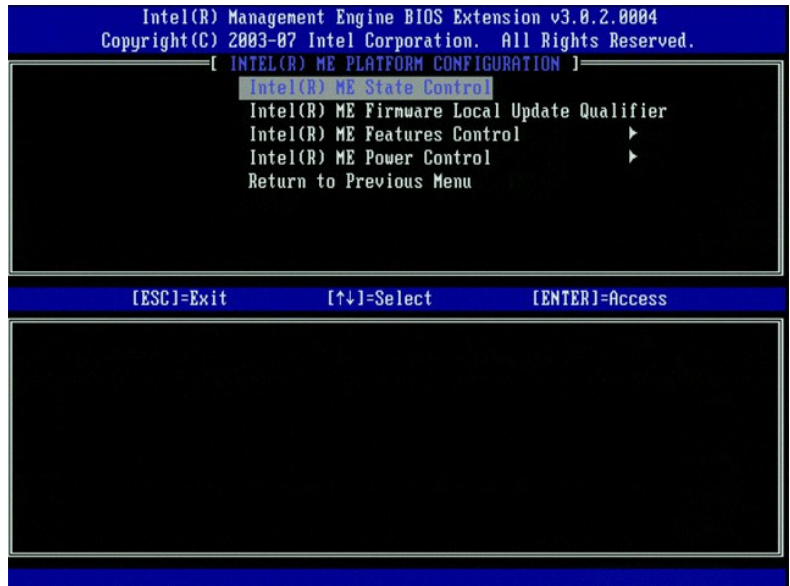
## (ME) Intel® Management Engine נ ת-ב ד, ך ך

:PbR(ON)B ,Intel® Management Engine (ME) Platform Configuration תנב/א תנב

- .<Enter> \$ ת .(ME -ב ד, ך ך) ME Configuration ” ם (MEBx) Management Engine BIOS Extension נ ך א ת ך פ ת ” 1.  
:ד-פ-ת תנב/א תנב 2.  
System resets after configuration changes. Continue: (Y/N)  
(המערכת תאופס לאחד שינויים בתצורה. המשך: (כ/ל))  
.<Y> \$ ת 3.

NNN .תW-תת- NN” ת ך ב - ך פא ,K-m-on ME -ת נ - ך ך BPTn - ך ב sK-Pn נ ת-ב א ד, -ס נ פאW ת” תנ .” PK (ME W-PENP נ ת-ב ד, ך ך) ME Platform Configuration תנ  
Rs<nRs/ )sWNRsQWNRs

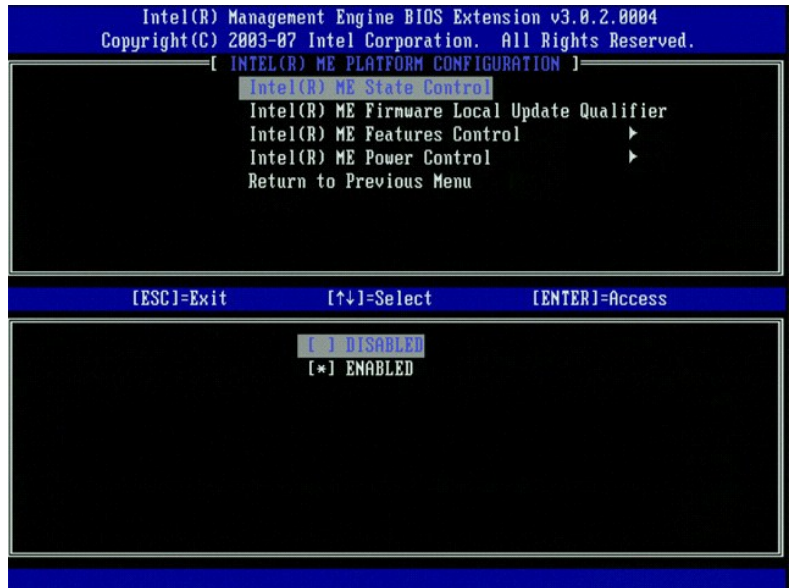
- [Intel ME State Control](#) 1
- [Intel ME Firmware Local Update Qualifier](#) 1
- [Intel ME Features Control](#) 1
- [Manageability Feature Selection](#) 0
- [Intel ME Power Control](#) 1
- [Intel ME ON in Host Sleep States](#) 0



## Intel ME State Control

.ד-ב (ME ם בW s ם) ME State Control ך פ ת ,(ME W-PENP נ ת-ב ד, ך ך) ME Platform Configuration ך פ ם ” םK (ME ם בW s ם) ME State Control - פא ת א ת  
Rs<nRs/ )sWNRsQWNRs





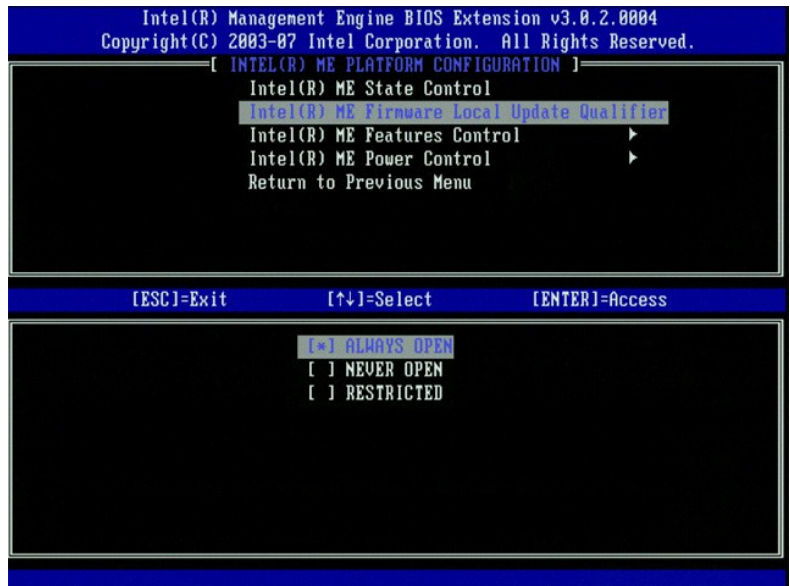
Intel(R) Management Engine BIOS Extension v3.0.2.0004  
Copyright(C) 2003-07 Intel Corporation. All Rights Reserved.

ME W-PENP 0BWS	
-a	- P a
W-PENP Management Engine -n a P a W	P-a W
W-PENP Management Engine -n a N E K W	(N E K W) Disabled

ME W-PENP 0BWS  
Intel(R) ME State Control  
Intel(R) ME Firmware Local Update Qualifier  
Intel(R) ME Features Control  
Intel(R) ME Power Control  
Return to Previous Menu

## Intel ME Firmware Local Update Qualifier

Always Open  
MEBx  
ME W-PENP N n-B  
ME Platform Configuration  
Restricted  
Never Open



Intel(R) Management Engine BIOS Extension v3.0.2.0004  
Copyright(C) 2003-07 Intel Corporation. All Rights Reserved.

Always Open  
MEBx  
ME W-PENP N n-B  
ME Platform Configuration  
Restricted  
Never Open









.(S3/S4/S5) Sx ON ME -n a p m W NW"n mCB N Nn" Wn QO NQO" .NFW ME -n QW Qp-s "OK NW"n mCB NQO"  
NW"n mCB NQO" Q"ON Qn a p NQ,WN -a N QK .Q"WO -WQ N RsaQO , -WQ pQ,QQ pO NW"n mCB NQO" a -"ON N-mQ pBsQ W NpKW

-mWK NW"mCB -NQO"							
NW"mCB NQO"							
7	6	5	4	3	2	1	
NFW	NFW	NFW	NFW	NFW	NFW	NFW	(N)P-WQW) S0
NFW	NFW	ME WoL	ME WoL	NFW	NFW	Qn	(RAM -N n-W) S3
ME WoL	NFW	ME WoL	NFW	NFW	Qn	Qn	(pK-QQ-Qm/sQp N n-W) S4/S5
Q	Q	Q	Q	Q	Q	Q	(NW" sTPn "a N Q-Qm ME) ME OFF After Power Loss

Wake on LAN – WoL \*

OFF QW Qn p"OK NW"n mCB NQO"Q Rsa .(G3) QW Q-Qm QW n" a N-Q-Q-K Intel ME ,(NW" sTPn "a N Q-Qm) OFF After Power Loss Q-Q-W p"OK NW"n mCB NQO"Q Rsa  
.(S5) Q" W n pO n W n" a N- (S0) Bs W N Q" W n a NQ,FW Intel ME ,After Power Loss

Intel AMT N-pQK-K-mQ p mQW N Q" W n Np-BQ, Qs

Intel Qna pQW Q N n pK-W n .QsK mQ, W N-"a NOs Rsn ,Intel AMT N-p-Q n p QPN n" W n" a N Q(NQ) ,(ME) Intel@ Management Engine pK-mQ n p a NW n-B Q, Qs "a N  
N-mQ RsdQ, Q" W Q n p N p a W -" pK-m .(MEBx) Management Engine BIOS Extension N Qa n Q P n W Intel AMT Configuration - P a n Q" Q "a N AMT configuration  
.Intel AMT N-pQK-K-mQ p mQW Intel AMT

.p" QW W Qs Q n W o-" n Na RsdQ" K-WQ T n .Rs-" Rs- N n" W QO Q, n K W mQ TW ,DNS ,IDE ,VLAN ,DHCP ,TCP/IP p m ,Rs Q" W Q-Q-N K n RRs Q" K-W-Q p n-Q, NQ T Q p K Q n s s p'







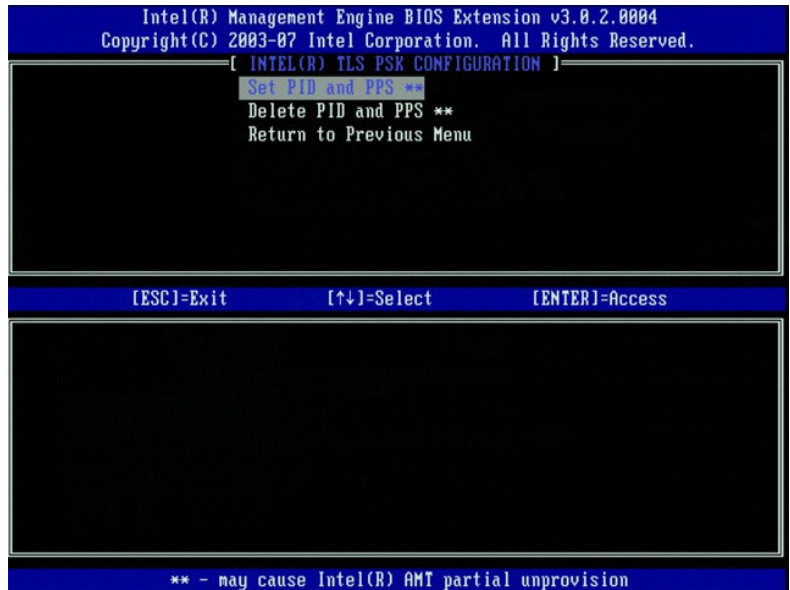
.PKI --PSK --\$ -Θ<sub>p</sub> r''' €Θαr -ηοr α NN-η r'' €ϘP, G<sub>W</sub>N<sub>p</sub>JK .n N r-\$r J<sub>p</sub>ϘΘsN rηοrN RsϘ€WPr α NN-η €ϘPr

[illegible]

## TLS PSK

(ABCD-1234-ABCD-1234-ABCD-1234-ABCD-1234 :PPS ;ABCD-1234 :PID ;(Not-started) -m-K-p-BD-Dos-nnepp Bw ,r' Gd-WWJk Rse .nnepp -B Bw pKw -Kz "0000-0000-0000-0000-0000-0000-0000-0000" N PPS Gd - nQj .nQj nN )  
 .naeQn-jC"MEbx --PID-K-NRSe .ME -GRS-RWSZm PPS -t PID -n sC" - Delete PID and PPS !

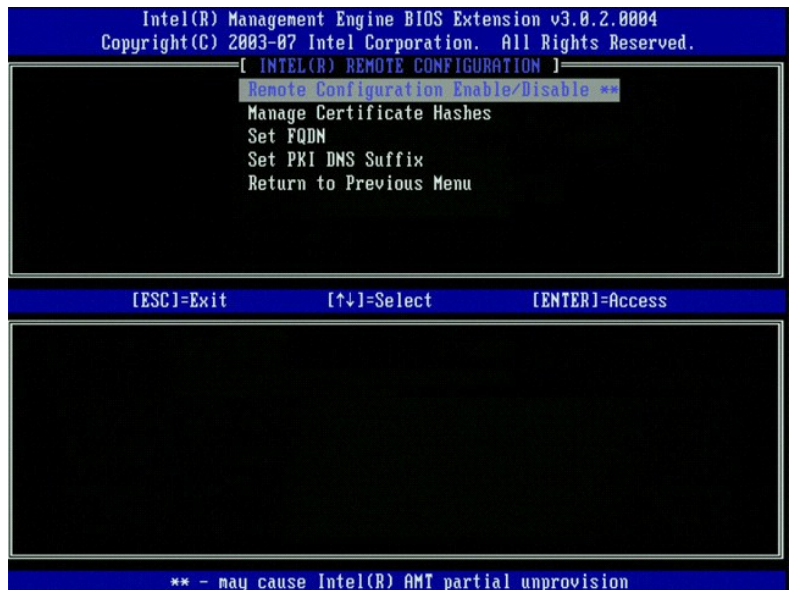




(s-~W n-B J,00s -n0n - TLS PKI

:s-~W n-B0n0n R000P nJ,00 R0000s .TLS PKI n nK0n 00P " -00W0K s-~W n-B n J,00s -0-P0

(s-~W n-B J,00s n-0K/- P0) Remote Configuration Enable/Disable 1  
Manage Certificate Hashes 1  
Set FQDN 1  
Set PKI DNS Suffix 1



(s-~W n-B J,00s n-0K/- P0) Remote Configuration Enable/Disable

Wn n 00K 0n 00 , -00-W 0000nJ, n00W 000n -0-P0 , n0-KW (s-~W n-B J,00s) Remote Configuration - P0n R00 .(n-0K) Disable --(- P0) Enable 0n -~0n 000K -0-P0n .Remote Configuration -P0n nJ, 0n0

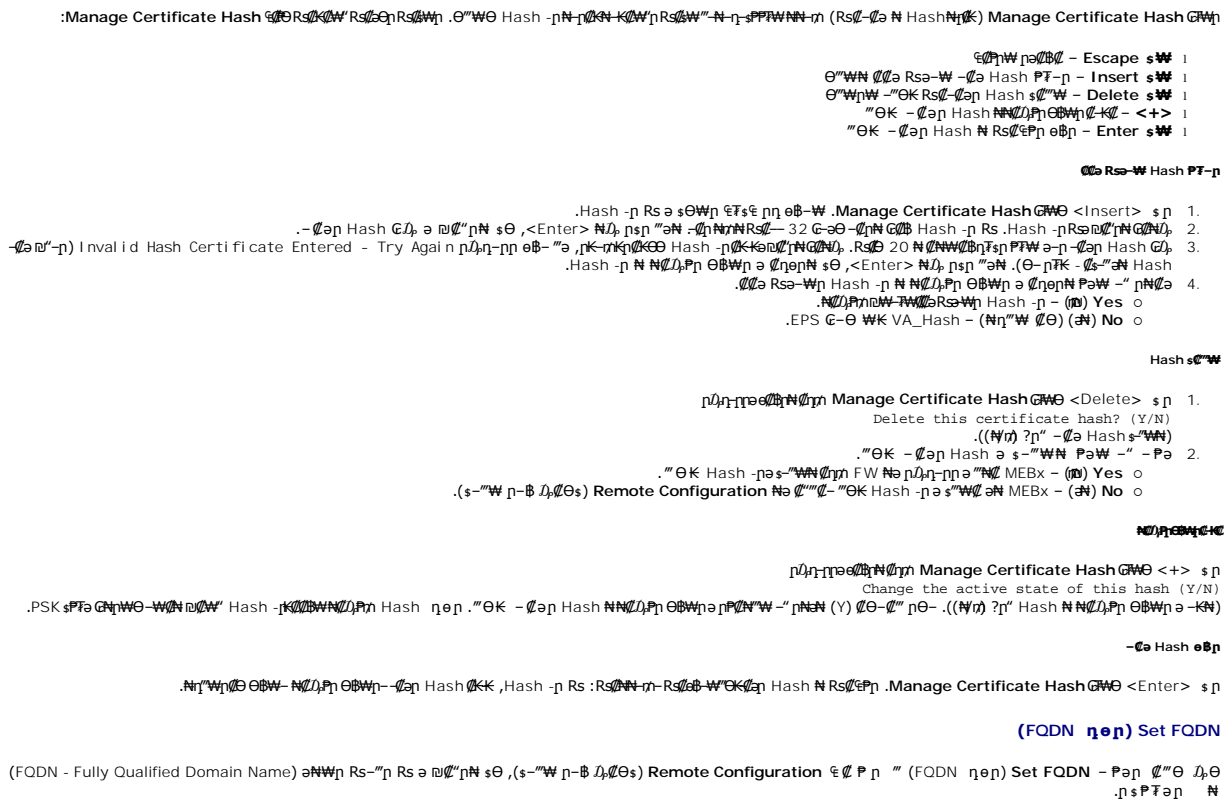
.nsP00-00 00W0 -0 0-sWn n00Wn 000 00W0K 0"W0m s n" 00P -K0n 000K .-" -P0 -K0n 000K 0n ,J,00W n-0n J,00s- n00n 000n J,00

.(J,00W) In-process 00W0 n-0n J,00s- n00n R00 ,0s0n" nsP00-00n R00W-0 s-~W n-B J,00s n n-0K -0-P0

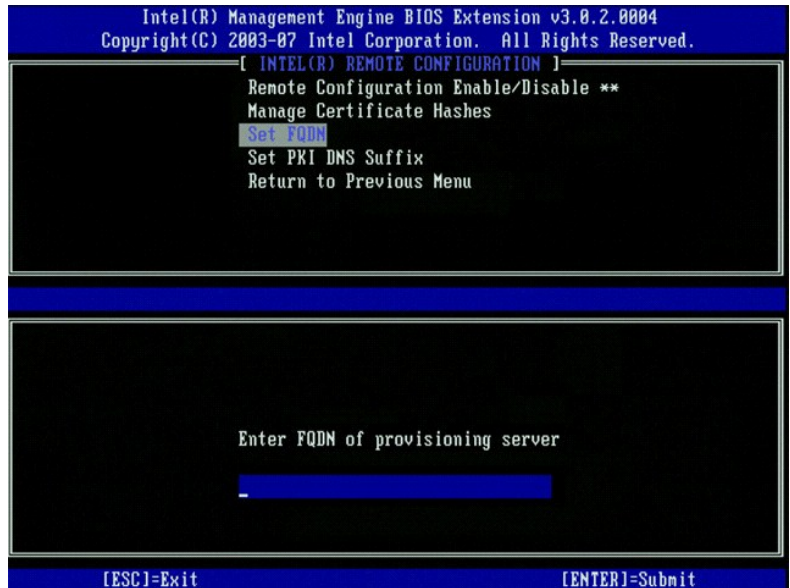
(R00-00n Hashn0K) Manage Certificate Hashes

N00W 00 Hash nJ,00 .Manage Certificate Hashes 0000 000n 000n (s-~W n-B J,00s) Remote Configuration 00P n " Manage Certificate Hashes - P00 "0 ."-00000n Hash 000n -0s-~Wn0K .00W00W



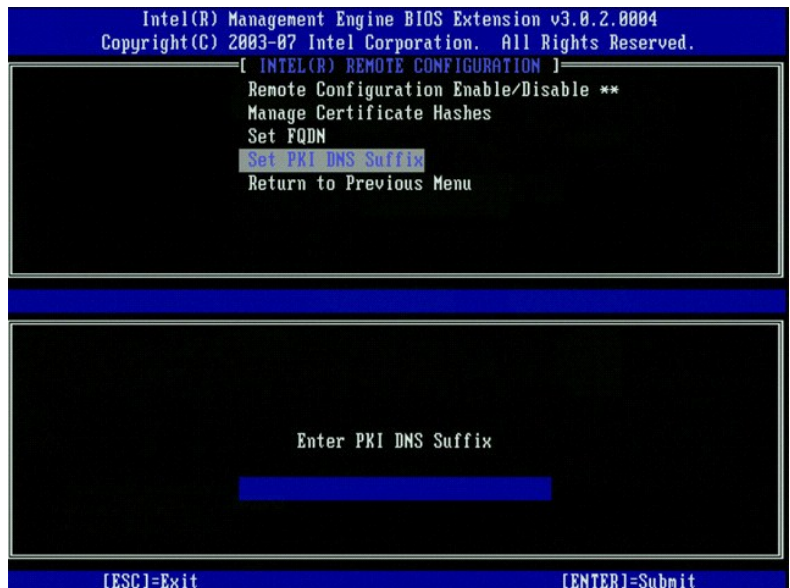






(PKI DNS **N W-ETn qep**) Set PKI DNS Suffix

**N** PKI DNS Suffix -n a m"n s0 ,(s-"W n-B Jz0s) Remote Configuration e P n " (PKI DNS **N W-ETn qep**) Set PKI DNS Suffix - Pa n "0 Jz0 .EPS-0 WK "PWn GJp .nsP7ep



(**nsP7a-6**) Un-provision

:nsP7a-6 nRs0-Tn-NRsk .-0-sWn Nn"Wn 00 -qepN Intel AMT -B a TPan PaW (nsP7a-6) Un-Provision - Pa n

.0-K0 aNN-K MEBx WT0T .PID/PPS -n a n0aW Ga ,nN Nn"Wn 00 0m0N Intel AMT -qep Nn a TPaW -" -Pa - (0sN" nsP7a-6) Partial Un-provision i  
 .0-K0 aNN-K MEBx WT0T .-nPaR0m0n0k,PID/PPSR0R0s .nN Nn"Wn 00 0m0N Intel AMT -qep Nn a TPaW -" -Pa - (nNw nsP7a-6) Full Un-provision i  
 MEBx WT0T .-nPaR0m0n0k,PID/PPSR0R0s .RspN Nn"Wn 00 0m0N Rs0m0n Nn a nskW -" -Pa .MEBx -0n0W nK0a-"nsP7a-0a - Pa - (CMOS00k) CMOS clear i  
 .(m0W "-"N eW WNN) CMOS -pa-sKN 00N0 ,-"-Pa N00Pn 0m0n .(admin) Nn"Wn 00 0m0N TPaW

VLAN

.(1-4094) VLAN Tag a 0nenN 0 , P-aW VLAN m0WRs .Intel AMT-00, VLAN -0 nm0Wn a N0KW -a PaW -" -Pa



















**၂၀၂၀-၂၀၂၁**

~~-K-C-~~ ~~-K-m~~

[illegible]

Երդի-ն Զոհ՝ ո'ւմ



## Serial Over LAN

## IDE Redirection

ግንባታው ሲገባ







**Ինքն ընթացիկ - քաղաքացիական անվտանգություն**

Dell™ ~~not a Dell product~~

- nsPTe WNNn s-''W n-B D<sub>2</sub>COsO -W
- nsPTe WNNn n-B D<sub>2</sub>COs -CO -W
- nsPTe WNNn MEBx sWWW -W

:(~~0~~0m-Wn Nə 0m-W -~~''~~PnW) nsPTəp GZnN WnNn -KZW'' -GZ -N.NnNnRsZRSZnBskZnKnn-W-Intel® AMT-NmZKPN,0''wN -\$ ə Jp-0sN Z

[illegible]

nsPTe WNN \$-W n-B Dp@e@ -W@

[illegible]

[.Rsc-Ca N HashN](#) n a ,Rsc-Ca N Hash NPT-n-ənsW-n-əJt-KDnWNOsN

```

Intel(R) Management Engine BIOS Extension v3.0.2.0004
Copyright(C) 2003-07 Intel Corporation. All Rights Reserved.
[ INTEL(R) REMOTE CONFIGURATION ]
Remote Configuration Enable/Disable **
Manage Certificate Hashes
Set FQDN
Set PKI DNS Suffix
Return to Previous Menu

```

---

```

Hash Name                                     Active      Default
VeriSign Class 3 Primary CA-G1               [*]         [*]
VeriSign Class 3 Primary CA-G3               [*]         [*]
Go Daddy Class 2 CA                          [*]         [*]
Starfield Class 2 CA                        [*]         [*]

```

---

```

[ESC]=Exit      [INS]=Add      [DEL]=Del      [+] =Active      [ENTER]=View

```

[illegible]
$$\text{CH}_2=\text{C}(\text{R})-\text{CH}=\text{C}(\text{R}')-\text{CH}_2 \quad (\text{PDI}) \quad n_s \text{PTA}-n_n'W- \quad (\text{PPS}) \quad n_s \text{PTA}-n_n'WT-n_n'\text{EOT}-n_n'$$

[.nTOP](#) n ə ,Hello -nKW-n-ə J-K JnQWNO\$N

~~nsPTe WNN n-B DpCΘs -CΘ -WC~~

USB ၂-၇"ခေ ဂျာဇာ-၁၀

[illegible]

nā , -a-n nēsN .CMOS -n Fb01-HL0, nB0n N nN"wn nON n-a TPā , nN" n-wn nRē .admin - nB0n N nN"wn nON n-a W MBX -n WIT Rē sN0 , P USB -nB0n nPā  
 .C-θ θ"wn N WWW C0nW0"m0W n0n"

[Dell Client Manager](#)

- [illegible]



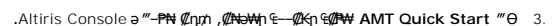
.N-10Kj-TW-PTNKP, USB DK-m "PW-D, BW-0 n-BD, //Os-men N/D, JT-K D, //WNOsN

```
:Intel AMT N-p-B Dp Qs- n n n N W N n- C C n n -e n - C n n n- W D p N e C C USB - n n- F " e n s n " P W
```

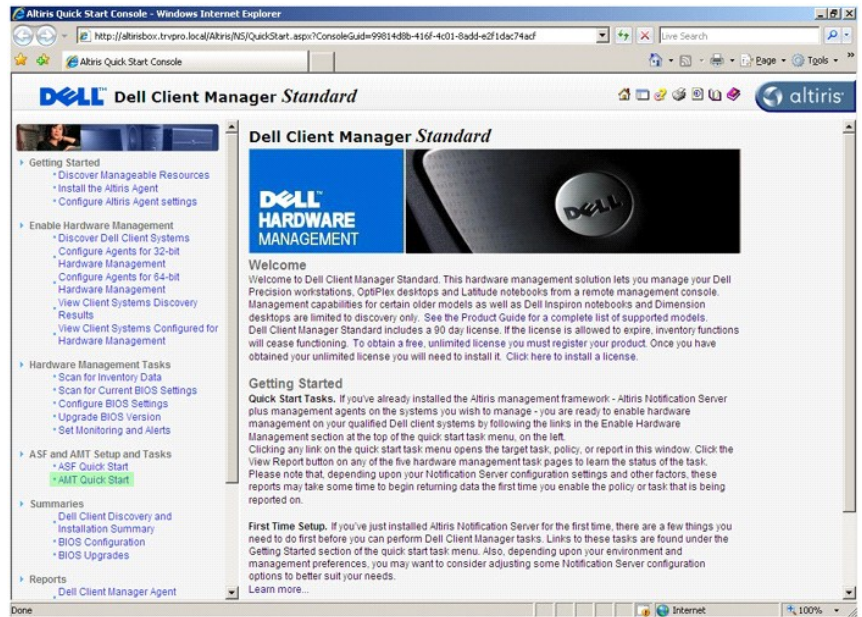
Dell Client Management ~~Rs-001-DPWE~~ Intel AMT # n-B DPCEs

.NDP PCHH E N'NG ND, n'N'Zm, N'nd-en, -nW D, BON O'WN R-SR S, n'DWN We NW ON, P-aWK H n'W K@a n'n'm-a-n N-CK K n-D, G

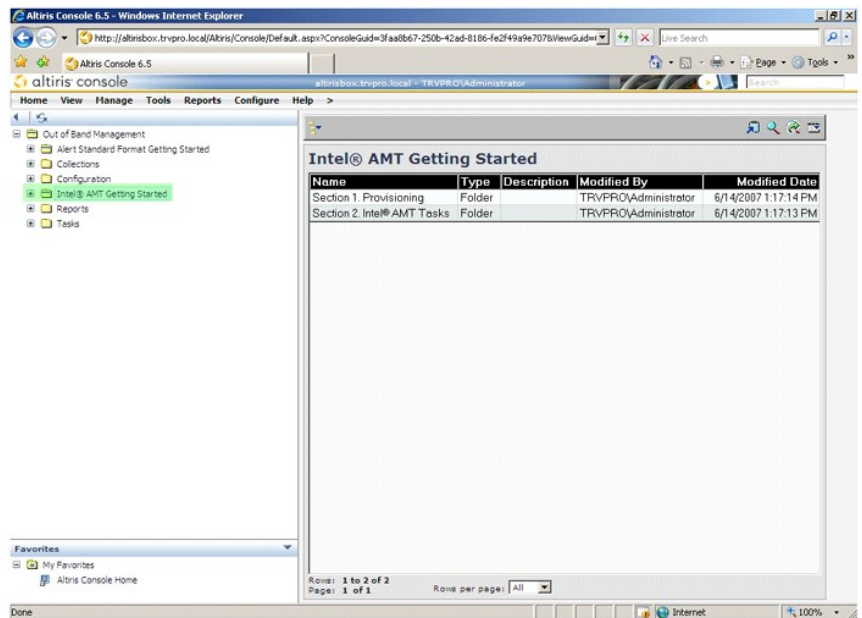
၂. နေရာအားလုံးတွင် အောက်ဖော်ပြပါအတိုင်း အသုံးပြုရမည့် အစည်းအရုံးများကို အသုံးပြုရမည်။





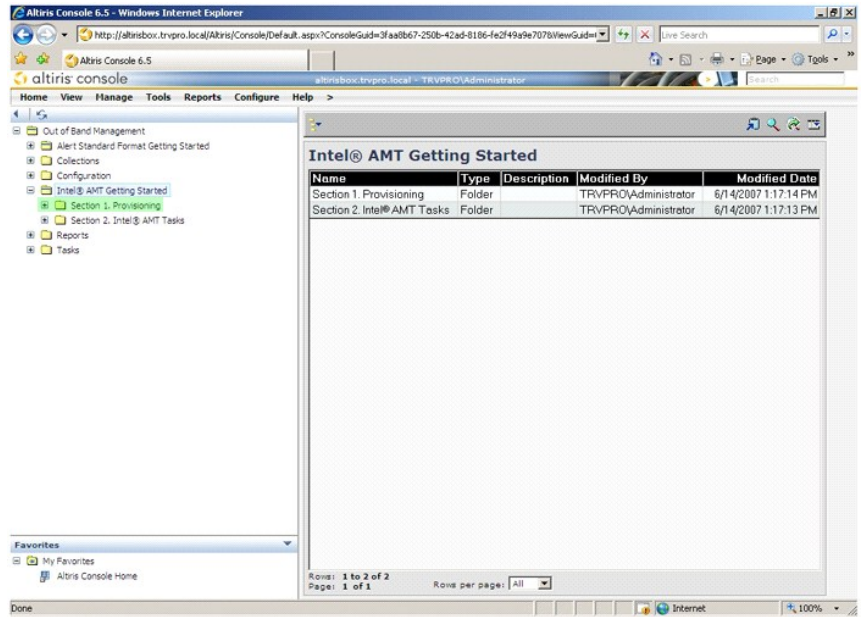


4. Intel AMT Getting Started (Screenshot of the Dell Client Manager Standard web interface)

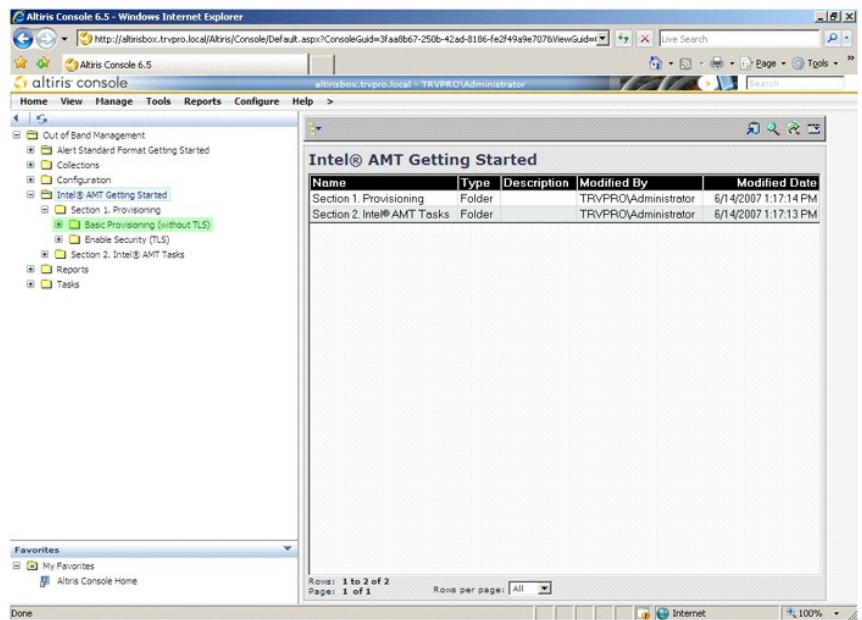


5. Section 1. Provisioning (Screenshot of the Altrix Console 6.5 web interface)





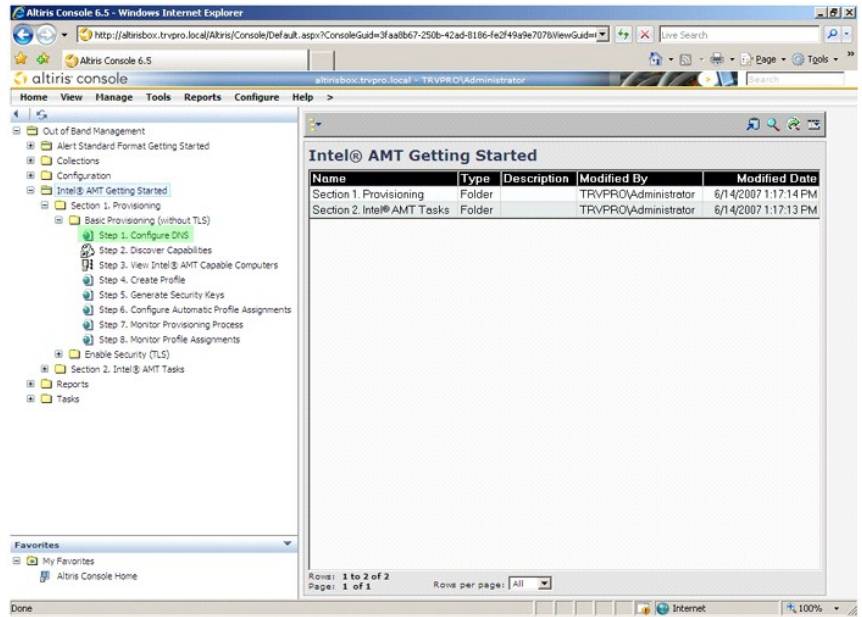
6. Basic Provisioning (without TLS) ~~is not shown~~ (+) ~~is not shown~~



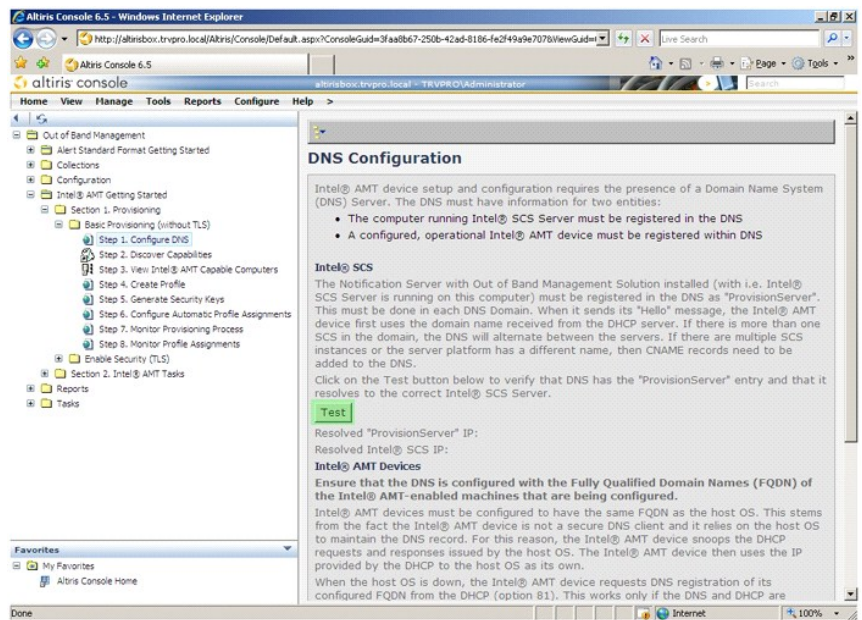
7. (DNS ~~is not shown~~) Step 1. Configure DNS "0"

"ProvisionServer" -mDNS -ORs -~~is not shown~~ out-of-band ~~is not shown~~ -P ~~is not shown~~ -O -~~is not shown~~



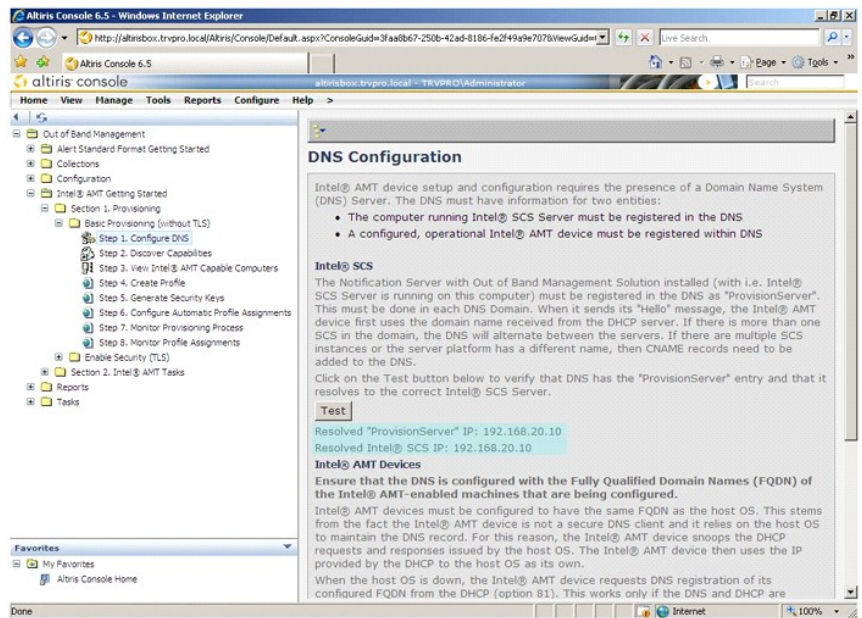


Intel® (SCS) ProvisionServer -n ProvisionServer -n DNS -n DNS Configuration (n) Test 8.

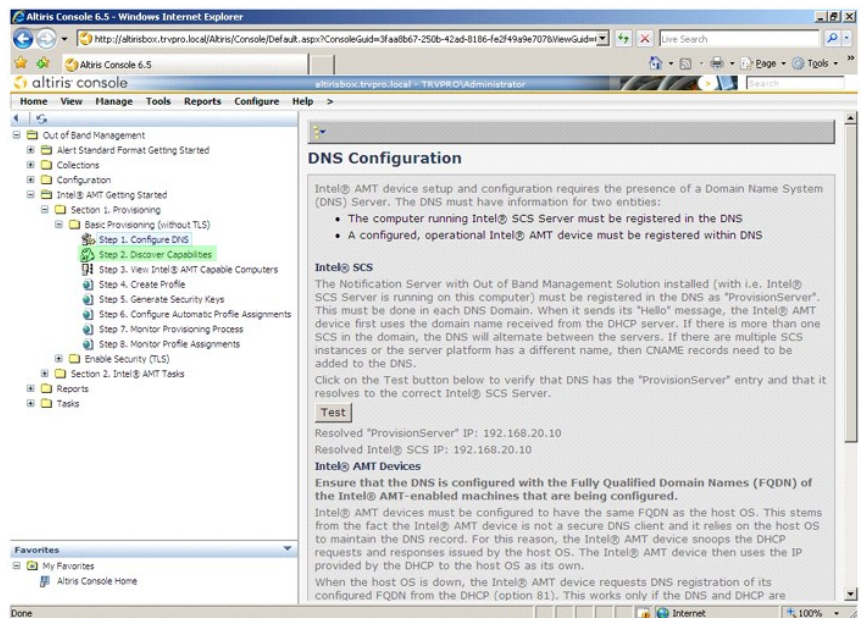


Intel SCS -n ProvisionServer -n IP -n



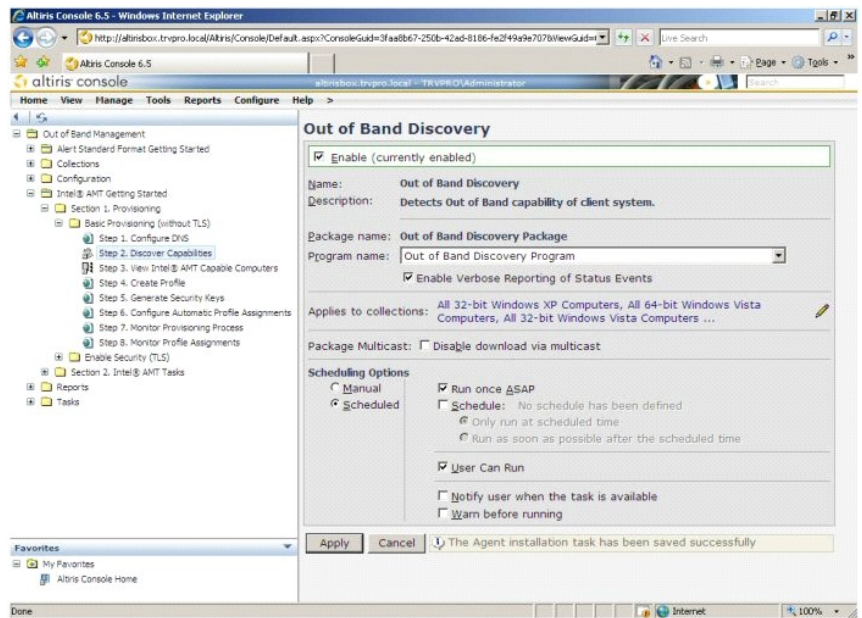


(CEN) Step 2. Discovery Capabilities "0 9.

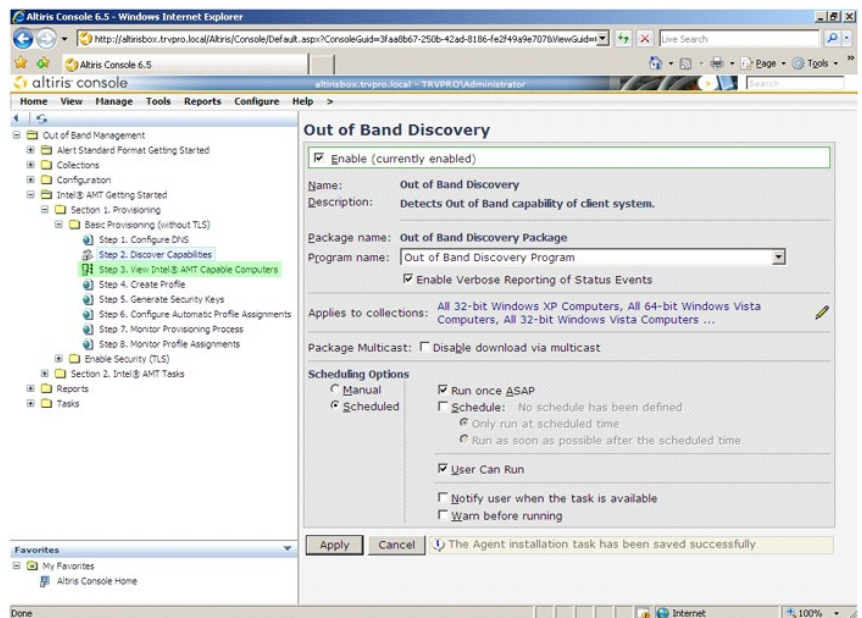


(N") Apply N) Disabled pNw-WZTnOZNU, =N, (N-KW) Disabled aZn pZnR aZn (P-aW) Enabled aZn pZnR aZn 01.



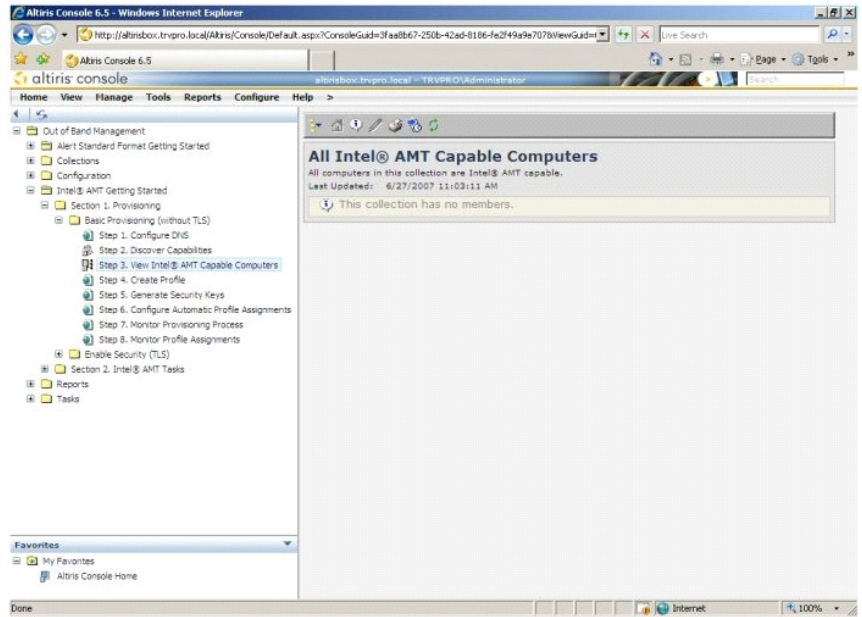


.(Intel AMT n-rs).Rs-OWn Step 3. View Intel AMT Capable Computers "Θ 11.

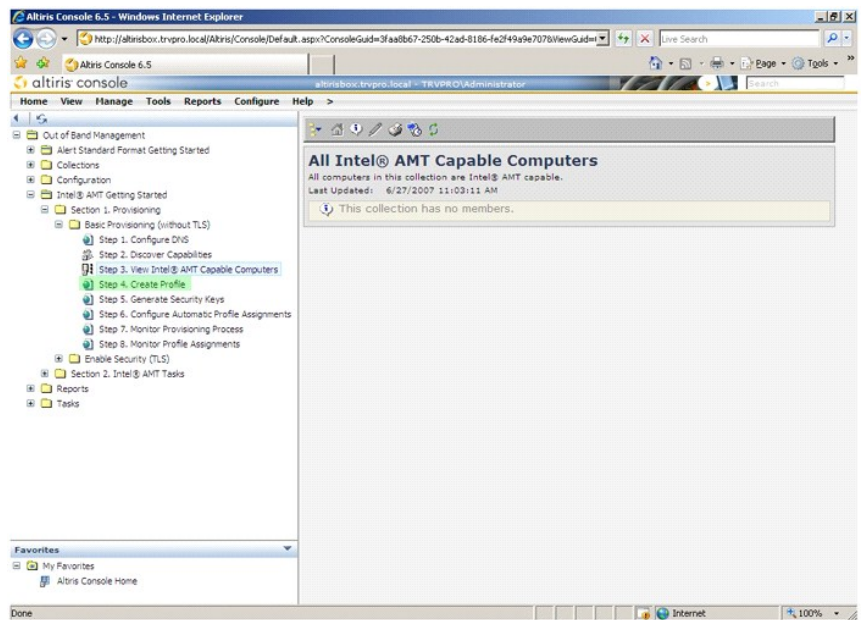


..- nWΘ Rs-OWn Intel AMT n-rs).Rs-OWn



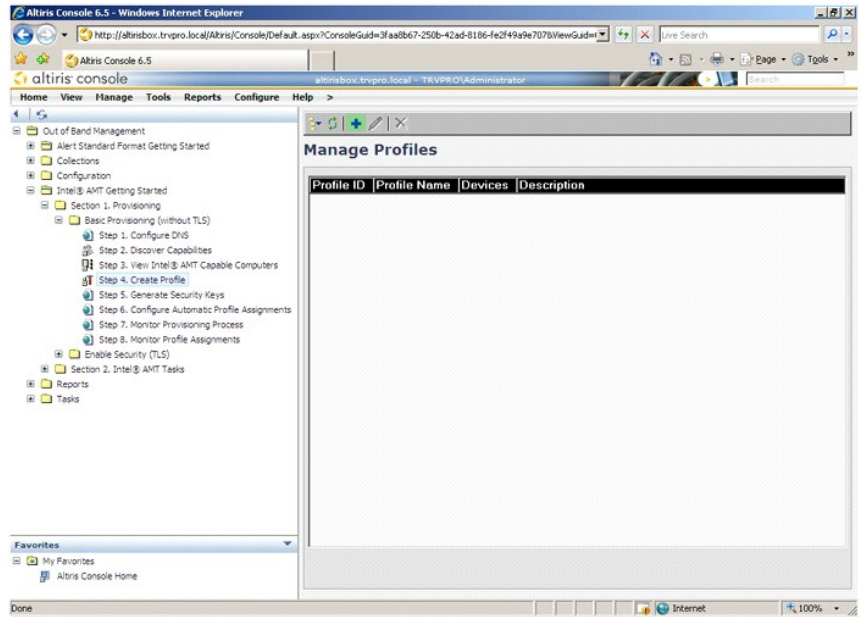


.(NOP-P) Step 4. Create Profile " 21.

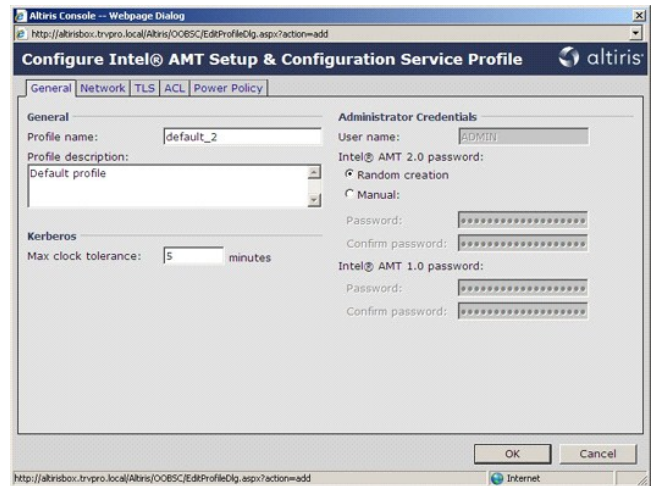


.1 NOP-P, ZI-N ( + ) T-N ( W ) = N 31.





manual -Pan 0B"NO "0 .n0,0 nNs ns-" Rn ,n0nWTC0nWn0Wn0W .nWT0Tn Rs0 .n"0 N0P-Pn -0/- Rs0 -Kn m0,Wn NnKW-P00 ,(0n) General n0Z00 41.  
 .n" nWT0Tn- (00)

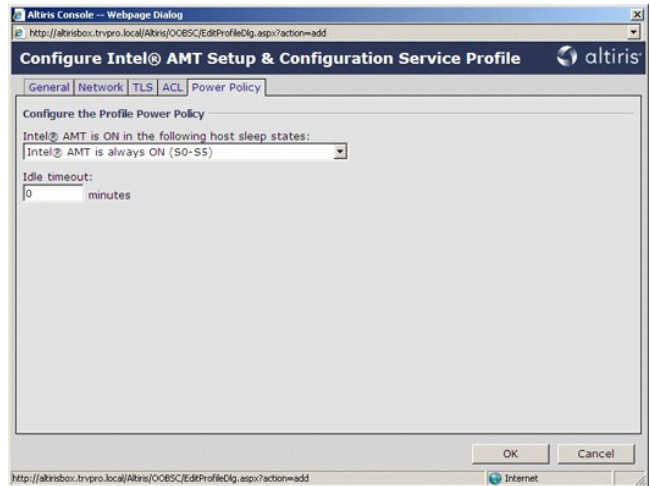


-K0W" nAn-n0n Nn ,Intel AMT 0Kn00n Rs0 .IDE Redirection --Serial over LAN,WebUI,VLAN,Ping -0- P0N -Pan 0 sPTW( ) Network n0Z00 51.  
 .MEBx -0s

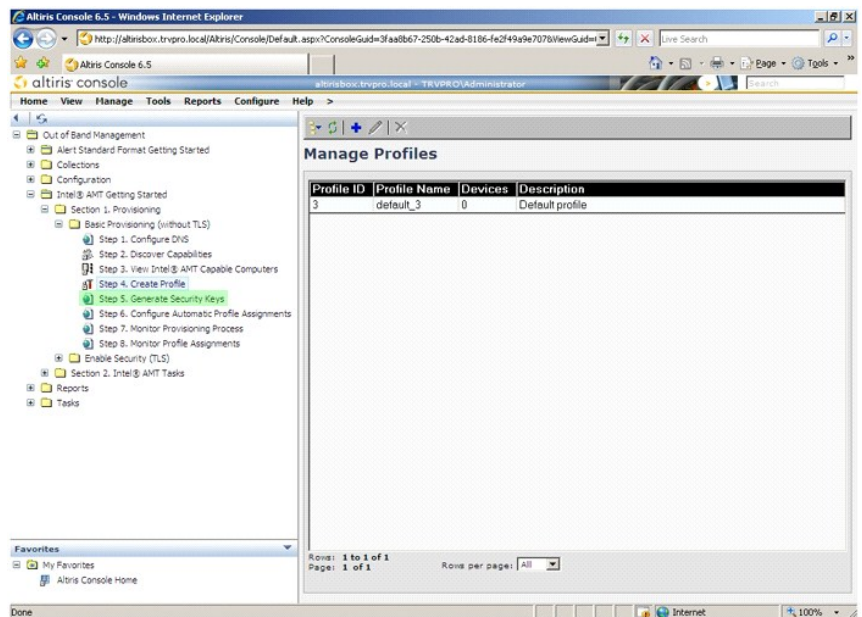






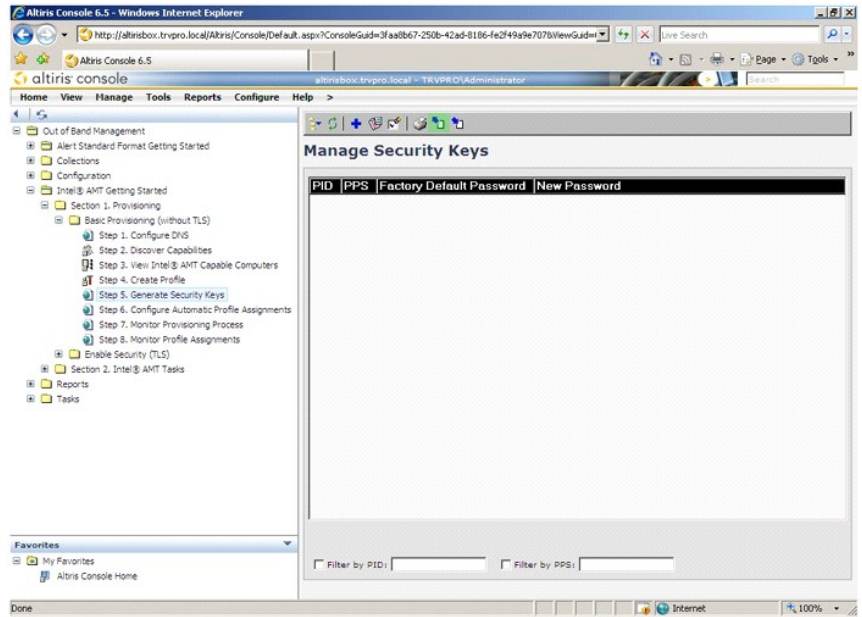


Step 5. Generate Security Keys 91.



Step 6. Export Security Keys to USB Key 92.





12. Generate keys before export – Pān 0B"Ń a "0



22. 50 0B"Ń 0B"Ń 0B"Ń (RsŃŃ sPŃŃ 0Rs0"ŃŃ PŃŃŃ RsŃŃ) s0PŃŃ 0 –"PŃŃ PŃŃ 0 0"Ń



Altiris Console -- Webpage Dialog

http://altirisbox.trnpro.local/Altiris/OOBSC/SecurityMEBxSettingsPage.aspx?selected=0&op=export

### Export Security Keys to USB Key

Export keys

☐ All

☐ Only selected

☒ Generate keys before export:

Generate Security Keys

Number of security keys to generate: 50

Factory Default Intel® Management Engine Password

Intel® ME Password: admin

New Intel® Management Engine Password

This password is either uploaded from USB key or typed in manually into the Management Engine BIOS Extension screen.

Intel® ME Password: Dell123!

Export Result

To create and download USB key file, first configure settings and click Generate file, and then click Download USB key file. Place downloaded file to the USB Storage Device.

Available: No data exported yet

Generate Close

http://altirisbox.trnpro.local/Altiris/OOBSC/SecurityMEBxSettingsPage.aspx Internet

32.  $\text{WTCT} \cap \text{Intel ME} \cap \text{admin} = \text{admin}$

Altiris Console -- Webpage Dialog

http://altirisbox.trnpro.local/Altiris/OOBSC/SecurityMEBxSettingsPage.aspx?selected=0&op=export

### Export Security Keys to USB Key

Export keys

☐ All

☐ Only selected

☒ Generate keys before export:

Generate Security Keys

Number of security keys to generate: 50

Factory Default Intel® Management Engine Password

Intel® ME Password: admin

New Intel® Management Engine Password

This password is either uploaded from USB key or typed in manually into the Management Engine BIOS Extension screen.

Intel® ME Password: Dell123!

Export Result

To create and download USB key file, first configure settings and click Generate file, and then click Download USB key file. Place downloaded file to the USB Storage Device.

Available: No data exported yet

Generate Close

http://altirisbox.trnpro.local/Altiris/OOBSC/SecurityMEBxSettingsPage.aspx Internet

42.  $\text{Generate}(\text{NNWW} \cup \text{PW}) = \text{NNWW} \cup \text{PW}$

Altiris Console -- Webpage Dialog

http://altirisbox.trnpro.local/Altiris/OOBSC/SecurityMEBxSettingsPage.aspx?selected=0&op=export

### Export Security Keys to USB Key

Export keys

☐ All

☐ Only selected

☒ Generate keys before export:

Generate Security Keys

Number of security keys to generate: 50

Factory Default Intel® Management Engine Password

Intel® ME Password: admin

New Intel® Management Engine Password

This password is either uploaded from USB key or typed in manually into the Management Engine BIOS Extension screen.

Intel® ME Password: Dell123!

Export Result

To create and download USB key file, first configure settings and click Generate file, and then click Download USB key file. Place downloaded file to the USB Storage Device.

Available: No data exported yet

Generate Close

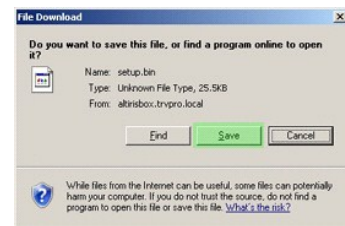
http://altirisbox.trnpro.local/Altiris/OOBSC/SecurityMEBxSettingsPage.aspx Internet



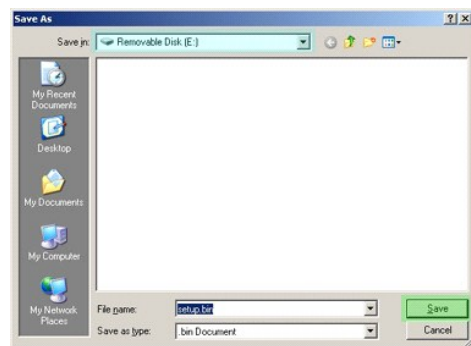
ProvisioningServer - USB 0" W C- N R s n N R s n - s W P USB - n n s n a T k n 52.  
 .USB - n n s n 0 = 0- s n a - W .N n W 0 n n n - W USB - n n s n .USB - n n s n N setup.bin = 0- s n a n n n n (USB " P W = 0- s n - n ) Download USB key file - 0- s n n n = N 62.  
 .0 setup.bin = 0- s n a n n n USB - n n s n a n " W W P N 0 , R s n P K - P W C- B n n n n 0 R s n



(= 0- s n - n ) File Download " 0- - n n 0 0 ( n 0 W ) Save N ) = N a.



( - W ) Save N ) = N .USB - n n n n 0 - W ( : 0 n 0 W ) Save in: N R s - 0 W n a n - b.

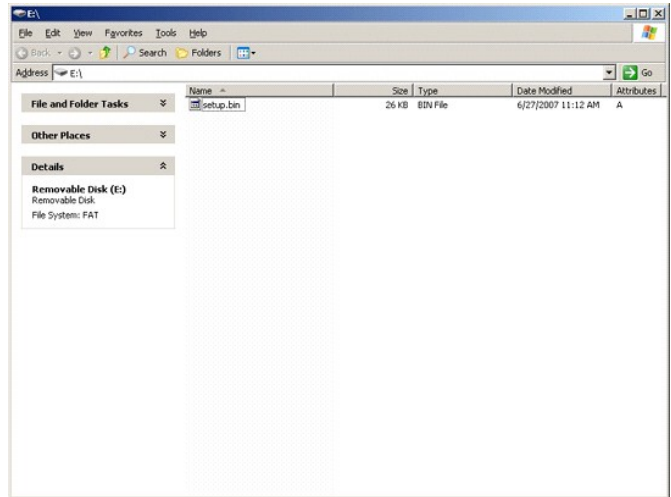


( n W n - n n - n ) Download Complete " 0- - n n 0 0 ( n 0 e T ) Close N ) = N c.



.n K - n n n n n n 0 0 setup.bin = 0- s n a - n n n K n n





Altiris Console - "Export Security Keys to USB Key" - 72.  
:re... USB - 82.

((N7/1K)) Continue with Auto Provisioning (Y/N)

.<y> \$ 92.

```
Intel(R) Management Engine BIOS Extension v3.0.2.0004
Copyright(C) 2003-07 Intel Corporation. All Rights Reserved.
```

```
Found USB Key for provisioning Intel(R) AMT
Continue with Auto Provisioning (Y/N)
```

...m)Wn N-"eG@WnN Qn -[Nn sW N]p = "N 03.

```
Intel(R) Management Engine BIOS Extension v3.0.2.0004
Copyright(C) 2003-07 Intel Corporation. All Rights Reserved.
```

```
Found USB Key for provisioning Intel(R) AMT
Continue with Auto Provisioning (Y/N)
```

```
Intel(R) AMT Provisioning complete
Press any key to continue with system boot...
```

```
Intel(R) Management Engine BIOS Extension v3.0.2.0004
Copyright(C) 2003-07 Intel Corporation. All Rights Reserved.
```

```
Found USB Key for provisioning Intel(R) AMT
Continue with Auto Provisioning (Y/N)
```

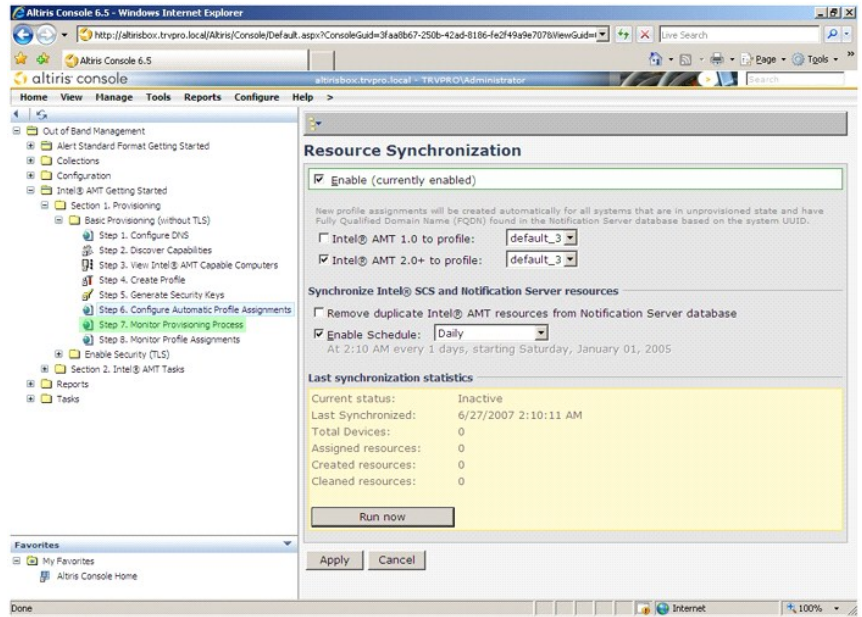
```
Intel(R) AMT Provisioning complete
Press any key to continue with system boot...
ME-BIOS Sync - Successful
```

N-nKp N- -"- O"Wn a nOm ,nN-JpN Wn "aN 13.  
.-(-W-e-a Rs(NP-P-aBn Nn-BJ,Os) Step 6. Configure Automatic Profile Assignments "O 23.

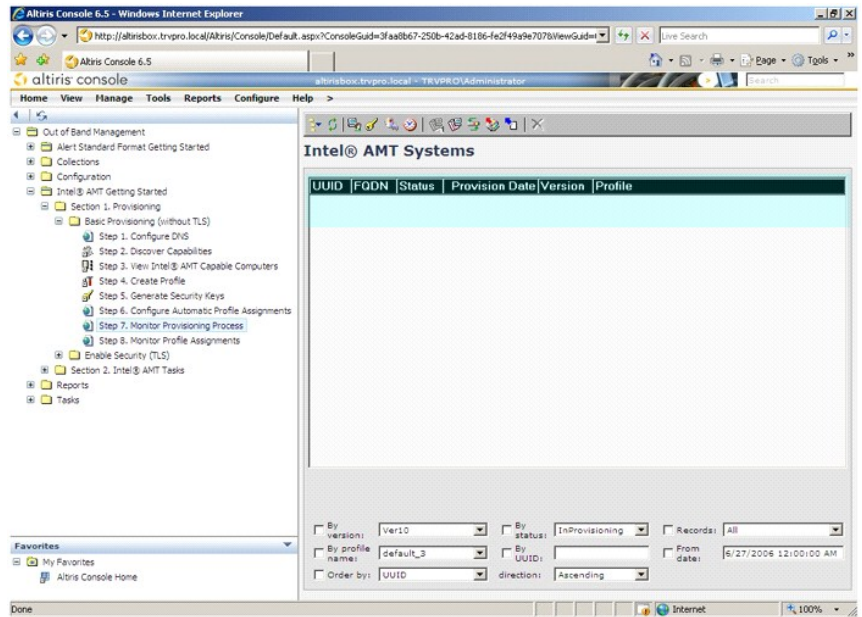








Step 7. Monitor Provisioning Process (Unprovisioned) - Step 8. Monitor Profile Assignments (Provisioned)



Step 8. Monitor Profile Assignments









~~m0wN "əwN Rsw pK - Qn OQ"~~ Intel AMT N "əwN Rs, GmJfK . nD Pnn m0wN IP - n θ-mw pK - Qn OQ" Intel AMT N IP - n θ-m, Cēē IP θ nη-θΔ θ W Rse . nD Pnn

.(IDE-R) IDE-Redirect-a (SOL) Serial-Over-LAN -N 0-W n-P n-om ,Intel AMT n n 0-T-m W n K 0 Intel AMT N -"en -C-P n N n a n 0 n W Intel AMT N n -B n 0, 0s

.N-pQJ-TW G<sub>1</sub>-əQW-sW p-BE O<sup>m</sup>WO RsQZ-Kqha D<sub>p</sub>BON C-PəO .O<sup>m</sup>Wn N-QZ<sup>m</sup> GNpWO -Ə RsQW D<sub>p</sub>-KN C-PəO p-βn D<sub>p</sub>QOs ONO -K--nohp ə

**K-æ ØWΘ n\$P7ə-G**

:K-ø ØBWO Ø'WN nsPTə DpBON-εZ ZNKZ

Rsa-η	1
IT TLS-PSK	1

## Rsm\$-n

[illegible][illegible]

## IT TLS-PSK

:RsdKRsdEnRsdEn.n0"n N (IT) DnWdZnN-KrfsN'WONN,GP-DB-OW IT TLS-PSK Intel AMT n-\$ DpEs- nnen

$\eta - \mathbb{B} \quad D_p \mathbb{Q} \Theta s - \eta \eta \Theta \eta \quad 1$   
 $\eta''' \in \Theta a - \quad \mathbb{Q} \quad 1$

[illegible]

SCS - N R s 0 0 W R s 0 0 W n 1 0 0 . ( T L S - P S K ) T r a n s p o r t L a y e r S e c u r i t y P r e - S h a r e d K e y - s - e - p - 0 0 W s 0 0 K P s - W - 0 1 n 1 n - m 0 1 . C n " n n 0 0 0 " I n t e l A M T N n - 0 n 0 0 0 s . 0 K - 0 0 0 W N n - 0 n 0 0 0 s n n 0 0 W ,

**OK-OBV**



ME N n-B DQs pə, -ə-n NOsN ~~Q-eoBWN~~ Intel AMT N-pə D-QsN ~~Q-eoBWN~~ Management Engine ə PəN ~~Q-eoBWN~~ Q'W N-pə D-QsN ~~Q-eoBWN~~ Q'W N-pə D-QsN ~~Q-eoBWN~~ Intel AMT - Pə :AMT N n-B DQsN ~~Q-eoBWN~~ Management Engine - Pə

~~KeoBAN~~ Management Engine - ~~Pa:ME~~ ~~N~~ ~~n-B~~ ~~Dp~~ ~~COs~~

:RsZnRsZnNaDDE,nDZnwPnP Intel ME N n-Bn DdCs -nen a Pn Qnm

.MEBxRs~~///N//N//~~ <Ctrl><p> \$ n , J~~EW~~ Dell N - e - N n G W a m , N - " a n G // N n G n W O - O " w n a N / , P n 1.



```
.-.-.-N n -wTTF .<Enter> $ n .Intel ME Password n n admin n n 2.
```

$$\text{MEBx} \text{---} \text{N} \text{---} \text{C} \text{---} \text{P} \text{---} \text{O} \text{---} \text{R}_5 \text{---} \text{C} \text{---} \text{K} \text{---} \text{D}_p \text{---} \text{B} \text{---} \text{O} \text{---} \text{C} \text{---} \text{K} \text{---} \text{P} \text{---} \text{N} \text{---} \text{N} \text{---} \text{W} \text{---} \text{O} \text{---} \text{W} \text{---} \text{C} \text{---} \text{F} \text{---} \text{a} \text{---} \text{K} \text{---} \text{C} \text{---} \text{N} \text{---} \text{D}_p$$


```

-WQsRNRsQW)Pm"nWTCnNsn.<Enter> s n.(Intel ME NWTCTnQ-KQ) Change Intel ME Password "0 3.

```

~~$$:\text{R}_n\text{O}^-\text{R}'_m\text{O}^- \rightleftharpoons \text{N}-\text{N}=\text{N}+\text{N}=\text{N}-\text{N}$$~~~~RSI-KW~~ !

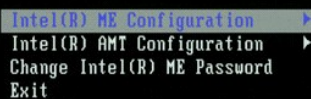


RS-17, " : N-17 ; -a, \$, !, (W-K-P-N) 17-17-1

$$[WTC]_n - G_n WRS / P_n WRS \leq G_n [WTC]_{n-1} R_n / P_n R_n - ( ) [ ]_{n-1} - \$$$
[illegible]

```
.<Enter> $ n .(Intel ME # n-$ 0.00$) Intel ME Configuration "0 4.
```

.NW-m-r"s-mD-N-mZ,NW" mZB-Z-Pa-e-m,ME-K-m N p-\$n a D-0sN PaW (ME W-PCNP N p-\$ D,Z0s) ME Platform Configuration

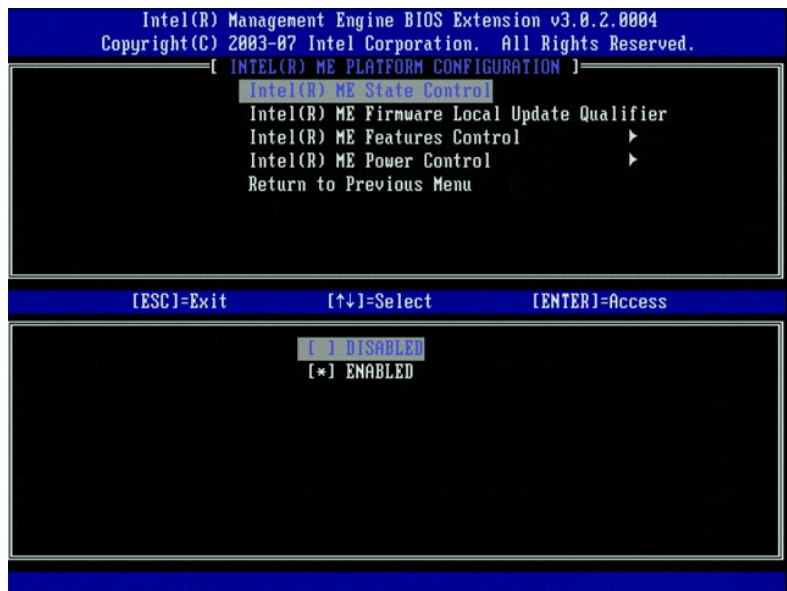


:D<sub>n</sub><sup>p</sup>-nəθn D<sub>n</sub>-nn 5.

System resets after configuration change. Continue (Y/N).  
(המערכת תאופס לאחר שינוי תצורה. המשך (כ/ל).)

.<y> s n

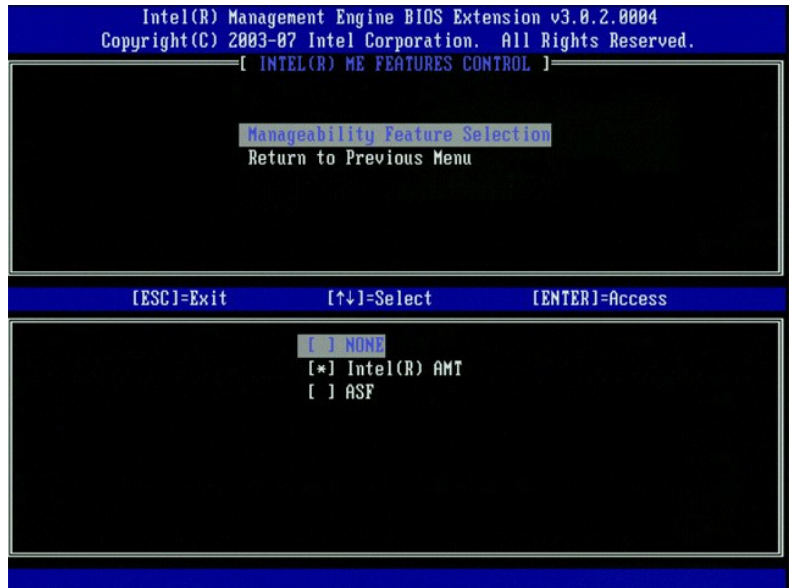




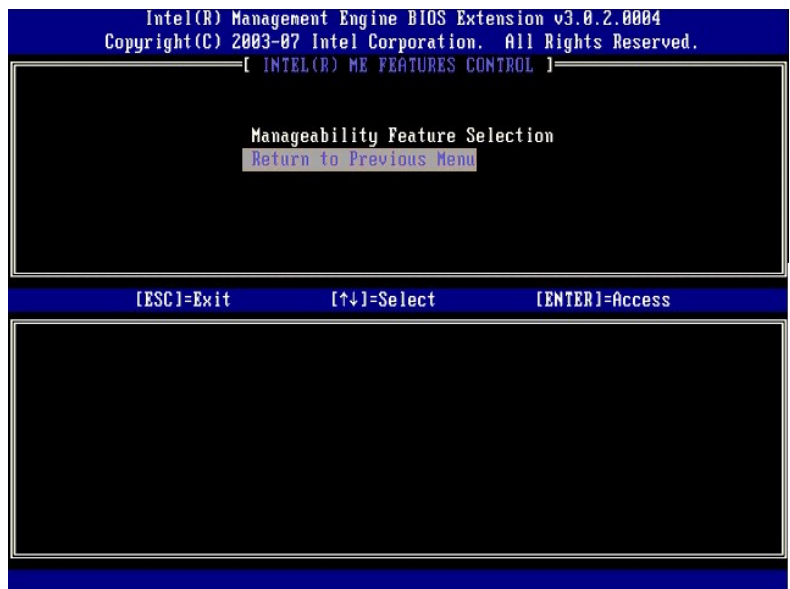








.<Enter> \$p.(Rsq~\$p \$Pn") Return to Previous Menu "0 11.

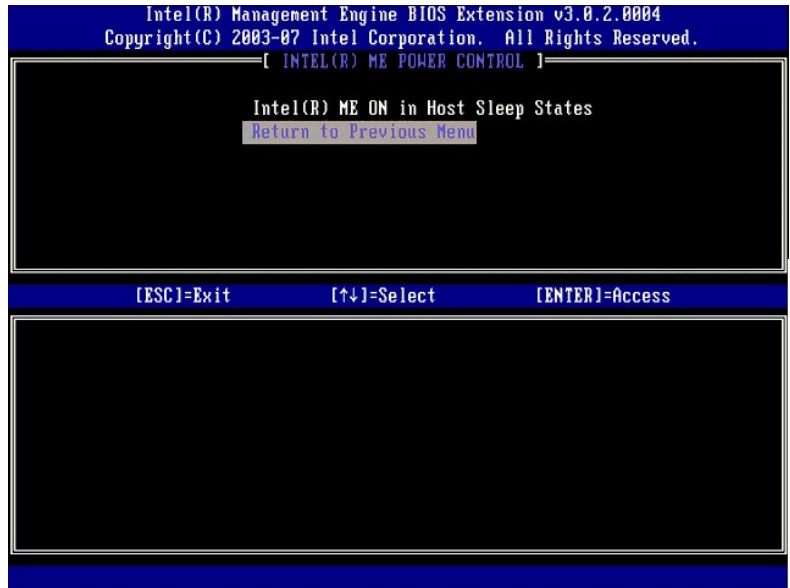


.<Enter> \$p.(Intel ME N N W" \$0) Intel ME Power Control "0 21.

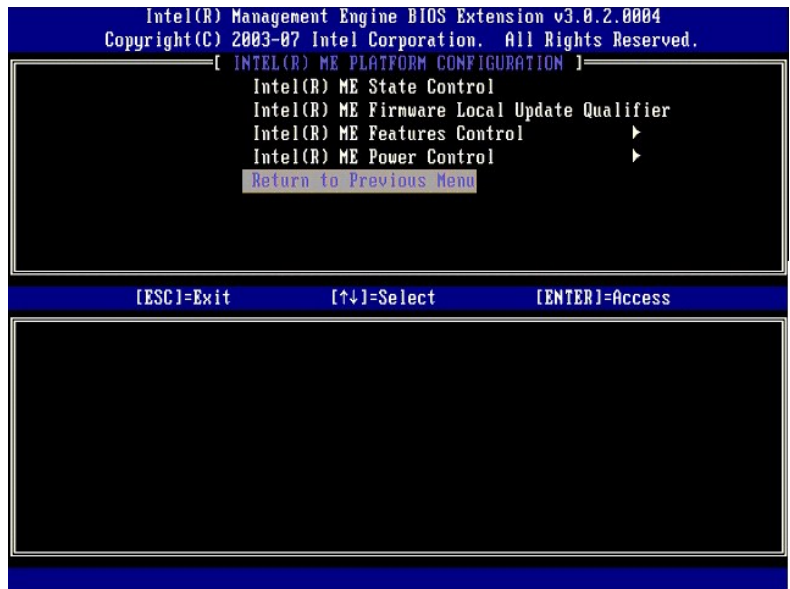








.<Enter> \$ p .(Rsn-\$p €@Pn p"" Return to Previous Menu "0 51.



Wn RsQ, jWnNpNpDOWW- (pWn-p Intel ME N p-B DpOs) Intel ME Configuration Complete nQn-pnæ@SWPn .ME -B æ -W - MEBx nørW æB 61.  
@e@Wn Intel AMT - Pa :Intel AMT N p-B DpOs næ , -æ-n N@sN .Intel AMT -nør N p-Bn æ Dp-@sN G-PæO ,ME N p-Bn DpOs

## @e@Wn Intel AMT - Pa :Intel AMT N p-B DpOs

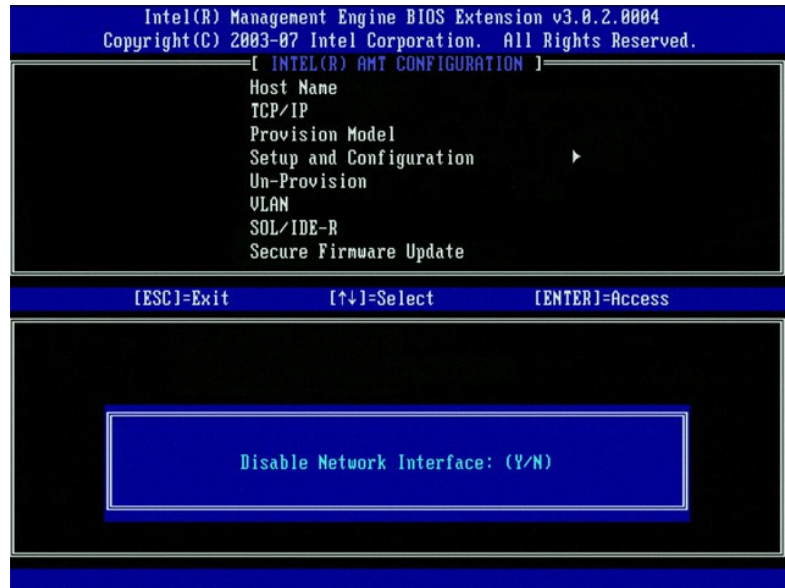
:RsQnRsQnæDpæ ,nQnW-PæPæ Intel AMT N p-Bn DpOs -nør æ PæN Qnrm

- .MEBxRsQnQnQn <Ctrl><p> \$ p ,QW Dell N-e-Np CTWæm ,N-"æp G@NnGNWQ- O"Wpæ NQpN 1.  
p n"p Intel ME WFT æ B"p .pWFTæSWp nQn-p nQp-W 2.  
<Enter> \$ p .(Intel ME N p-B DpOs) Intel AMT Configuration "0 3.



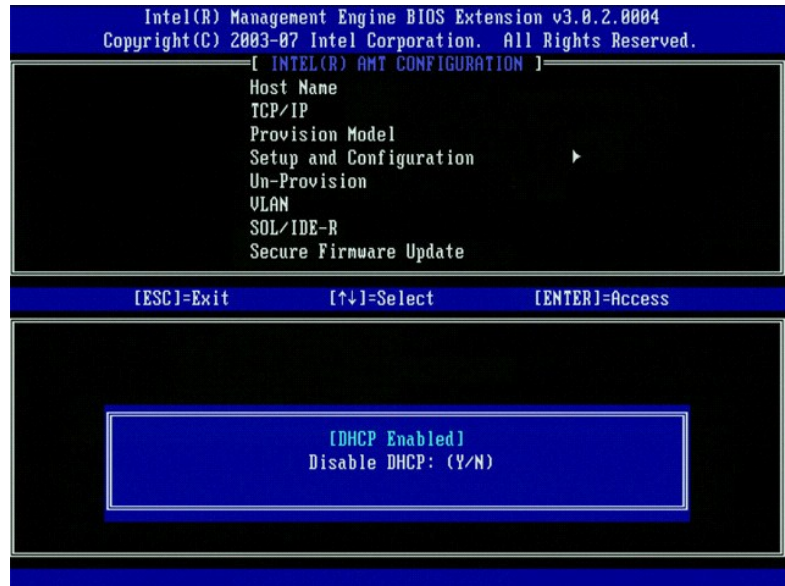






[DHCP Enable] Disable DHCP (Y/N) |

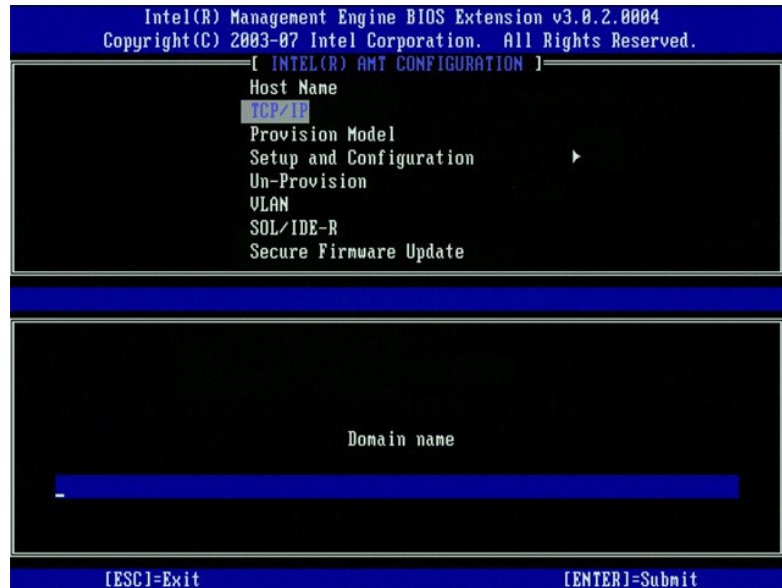
.<n> \$n



(Domain Name) Domain Name |

.nq9 Rs-“n Rs a nN\$P



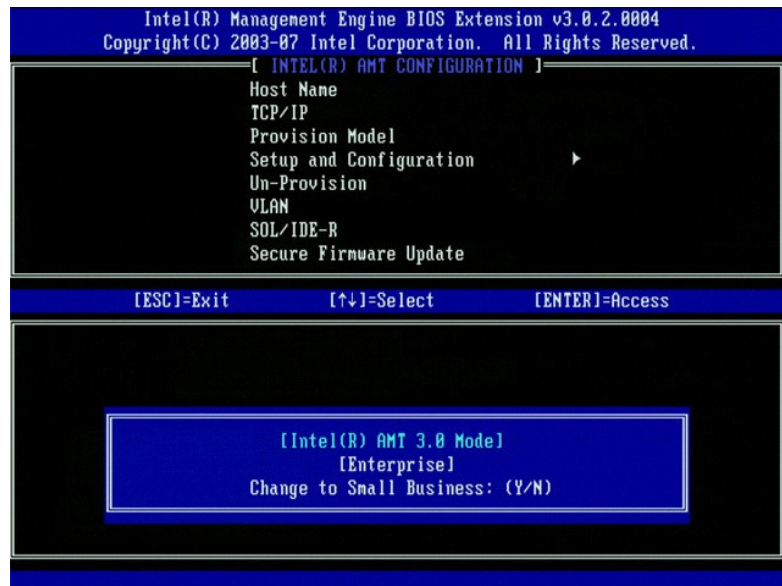


6. Provision Model "Θ,€PnW" (nsPferse) \$n .<Enter> .

תחילת התהליך:

1 (Y/N) [Intel (R) AMT 3.0 Model] [Enterprise] change to Small Business: ((מציב Intel (R) AMT 3.0) [ארגוני] החליף לעסק קטן: (כן/לא))

\$n <n> .

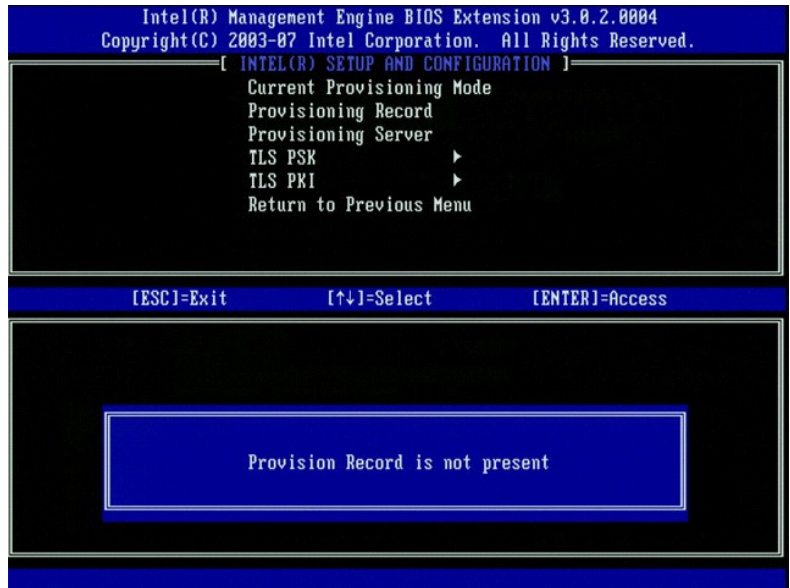


7. Setup and Configuration "Θ,€PnW" (n-ß 4s-תת) \$n .<Enter> .



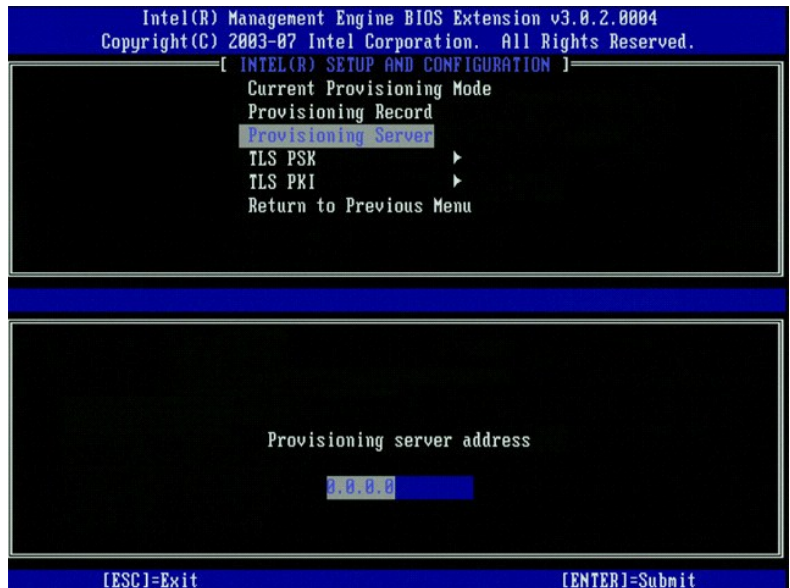






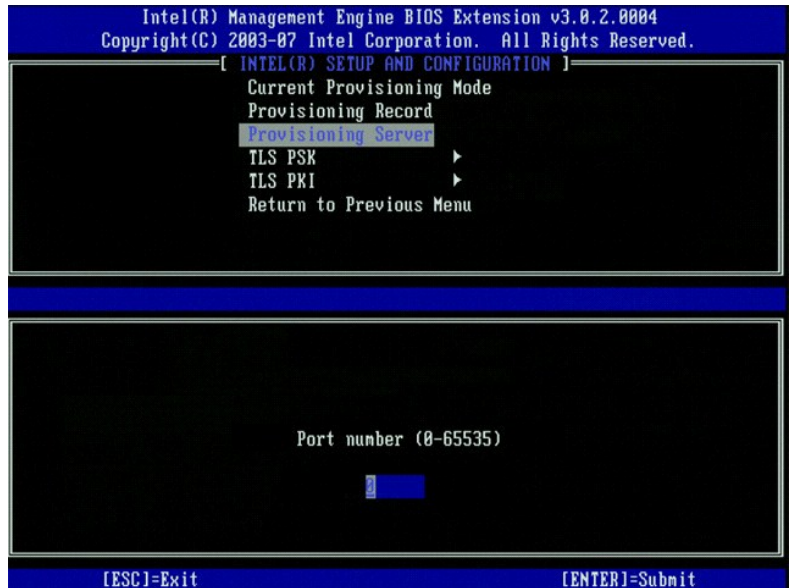
.<Enter> \$p.(p s P T a ) Provisioning Server "0 ,0 0 P n W 01.

\$ N D , - P - " N n " W 0 0 n e p .0.0.0.0 a 0 n N n " W n 0 0 n e p .<Enter> \$p- (p s P T a 0 - m) Provisioning server address n n 0 p s P T a n N IP -n 0 -m a n n s p 11.  
.n s P T a n N IP -n 0 -m n n s P T a n a " K D , P N N -m 0 0 , N N -m DNS -n R s a

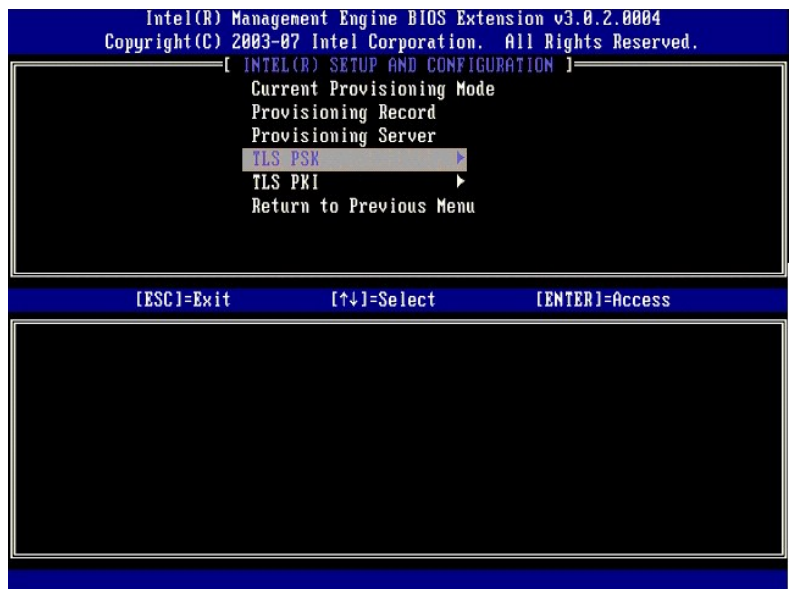


n a 0 0 0 p s P T a n R s D , s - B 0 N n T K W Intel AMT ,0 N n " W n 0 0 n e p a R s 0 0 a W R s a .0 a 0 n N n " W n 0 0 n e p .<Enter> \$p- (n a 0 0 P n W) Port number n n 0 n a 0 0 0 n a n n s p 21.  
.n a n n n -a n n " , " a n a 0 0 0 n a 0 0 a W n s P T a n R s a .9971





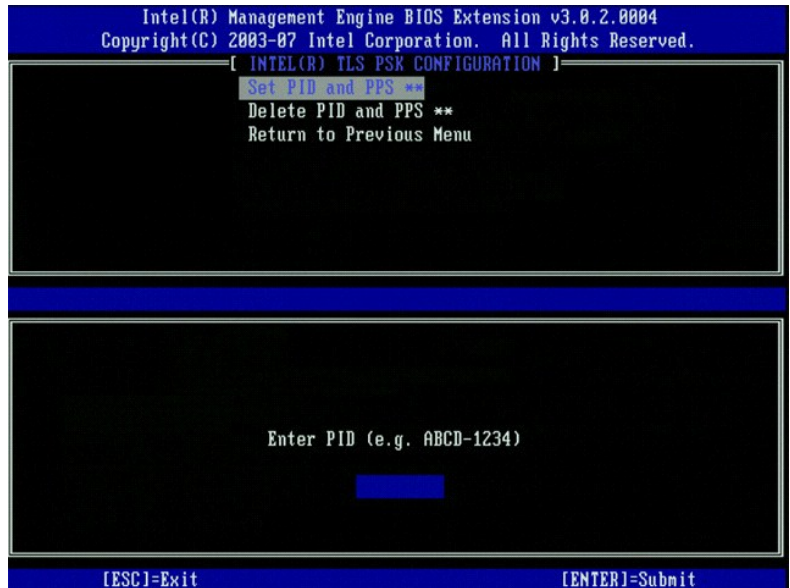
.<Enter> \$n.TLS PSK "0,0PnW 31.



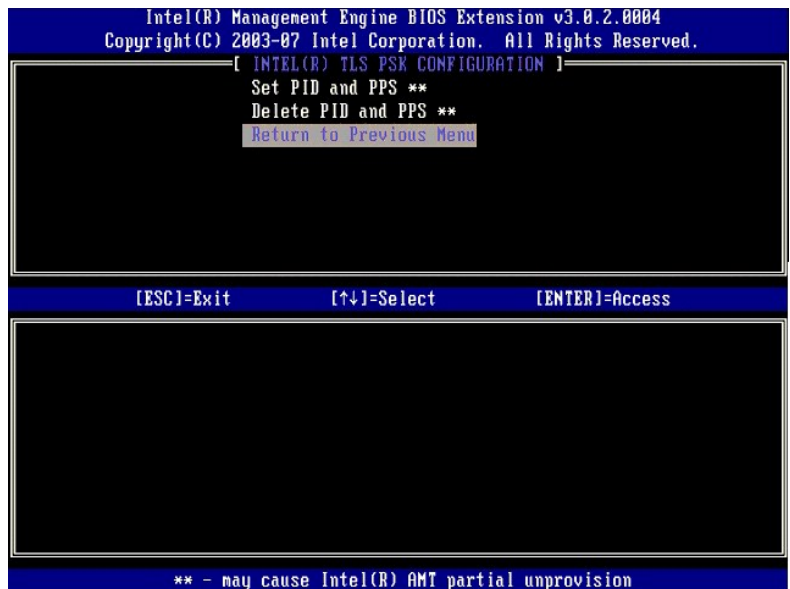
.RSL-1-0PnW SCS -n "0N ,USB "PW-0,0W0-000000000000 PPS -n PID -n 0 .(PPS --PID 000) Set PID and PPS 000 n000 -P00 41.

PID 000RSL-0PnW-n000000000000 ,RSL-n000000000000RSL-0PnW-n000000000000 .RSL-32 000 PPS 000RSL-8 000 PID 000 .(PPS) n000000000000 (PID) n000000000000 -P0  
SCS-0,0W0RSL-000000000000 .RSL-40 000 PPS 000RSL-000RSL-n000000000000





.Nn"W @ON n"" n a ,n sPTa-@-n-a JF-KDn/WNOsN .wB@n N Nn"Wn @ON O"Wn a n@""W -" -Pa .(PPS --PID s@""W) Delete PID and PPS -Pan N.D. eNn 51.  
.<Enter> \$n .(Rsn-\$n @Pn n""") Return to Previous Menu "O 61.

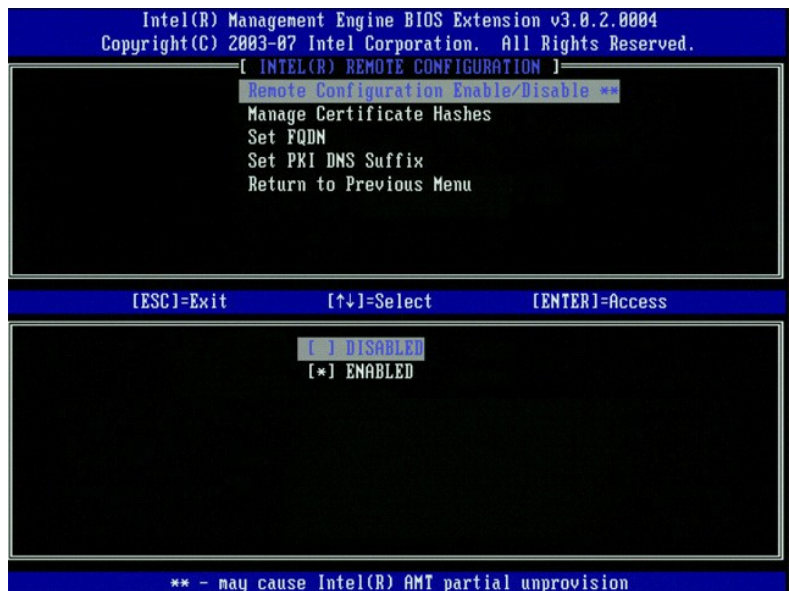


.<Enter> \$n .TLS PKI "O ,@PnW 71.



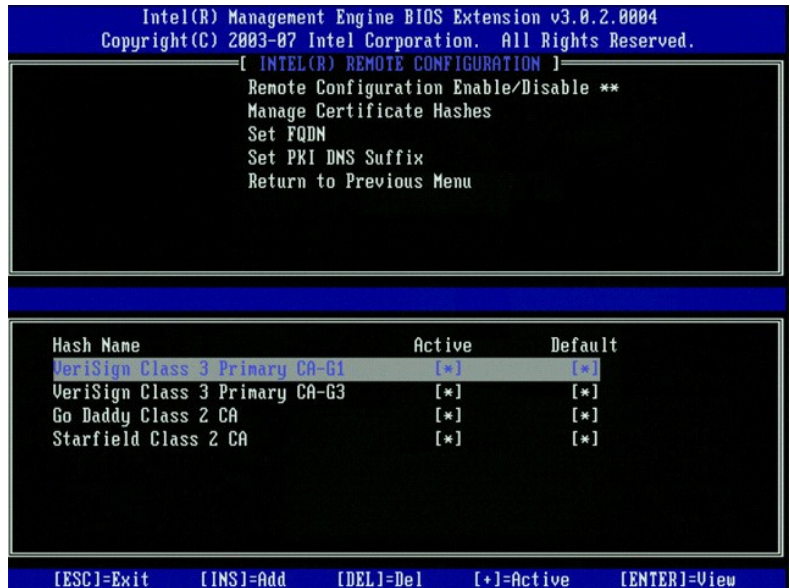


Intel(R) Management Engine BIOS Extension v3.0.2.0004  
Copyright(C) 2003-07 Intel Corporation. All Rights Reserved.  
[ INTEL(R) SETUP AND CONFIGURATION ]  
Current Provisioning Mode  
Provisioning Record  
Provisioning Server  
TLS PSK  
TLS PKI  
Return to Previous Menu  
[ESC]=Exit [↑↓]=Select [ENTER]=Access

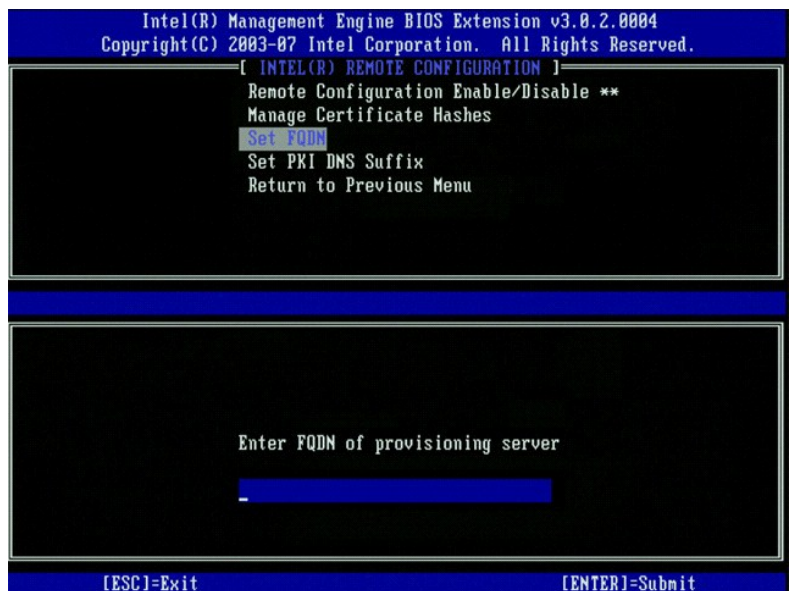


Intel(R) Management Engine BIOS Extension v3.0.2.0004  
Copyright(C) 2003-07 Intel Corporation. All Rights Reserved.  
[ INTEL(R) REMOTE CONFIGURATION ]  
Remote Configuration Enable/Disable \*\*  
Manage Certificate Hashes  
Set FQDN  
Set PKI DNS Suffix  
Return to Previous Menu  
[ESC]=Exit [↑↓]=Select [ENTER]=Access  
[ ] DISABLED  
[\*] ENABLED  
\*\* - may cause Intel(R) AMT partial unprovision



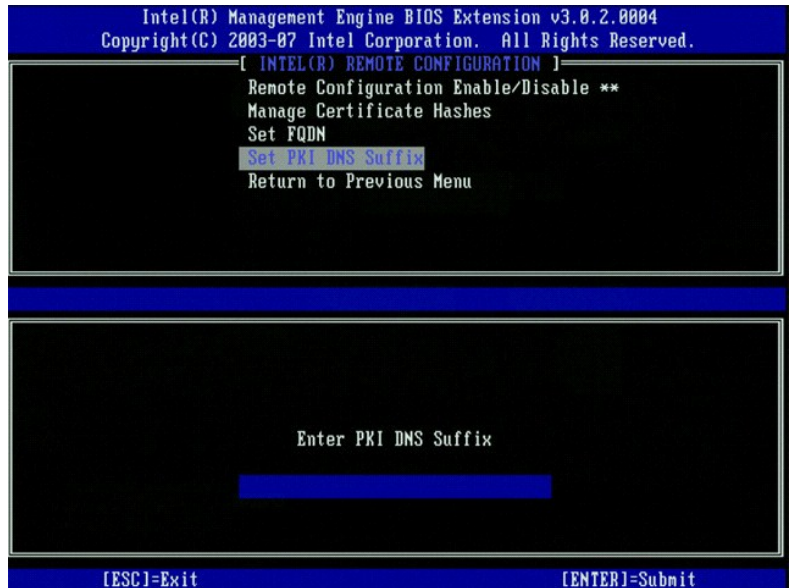


.<Enter> \$p- æΘp πηΘ πsP7æp N FQDN -p æ ηNsp .<Enter> \$p .Set FQDN "Θ ,ε@PpW 02.

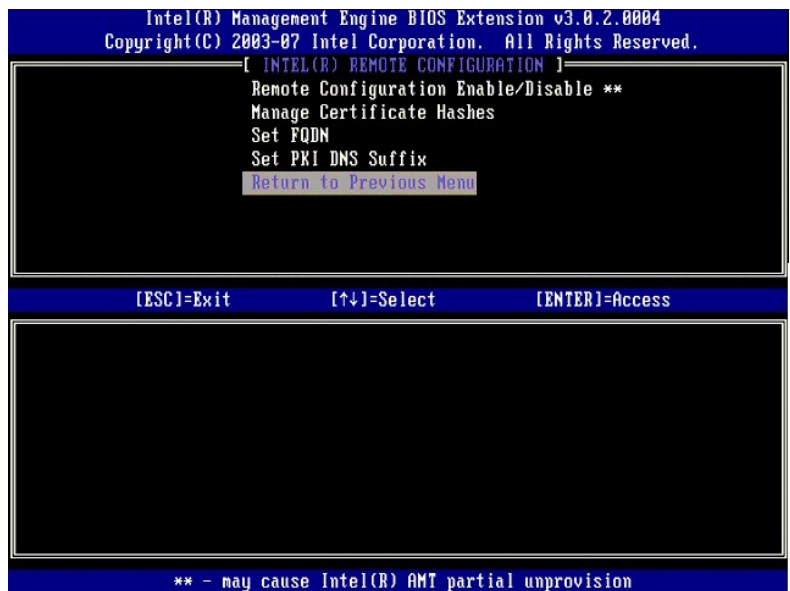


.<Enter> \$p- æΘp πηΘ PKI DNS -p W-@T æ ηNsp .<Enter> \$p .(PKI DNS W-@T ηep) Set PKI DNS Suffix "Θ ,ε@PpW 12.





.<Enter> \$n.(Rsn-\$n €€PN n""") Return to Previous Menu ""Θ 22.



.Intel AMT Configuration €€PN G-a €"" -" nN-JP .<Enter> \$n.(Rsn-\$n €€PN n""") Return to Previous Menu ""Θ 32.

.Nn""W €€ON n"" n€ ,nsPT€-€€-n-€IT-KJn€WN€N .wB€n N Nn""Wn €€ON Θ""Wn € n€""W -" -P€ .(nsPT€-€) Un-Provision -P€n NJ, €Nn 42.

.<Enter> \$n.VLAN ""Θ ,€€PnW 52.

:J€P-re€n/€n-€n

[VLAN Disabled] Enable VLAN: (Y/N) I

.<n> \$n





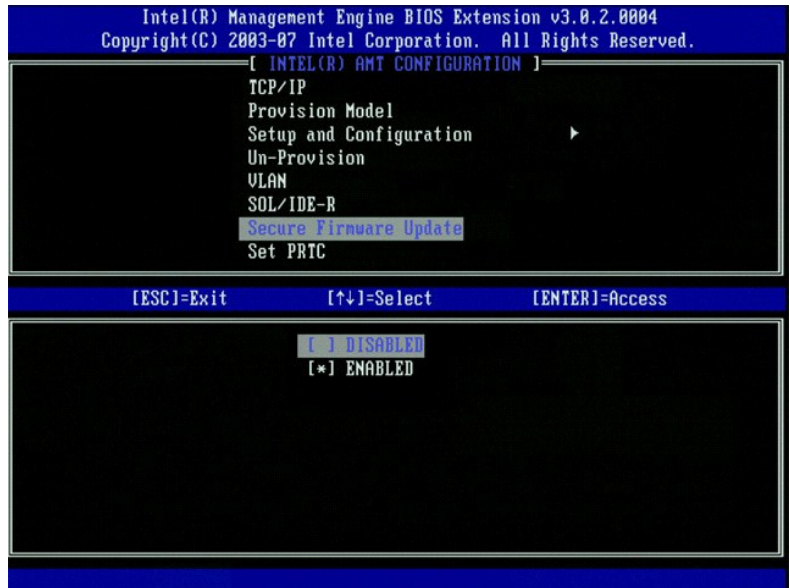




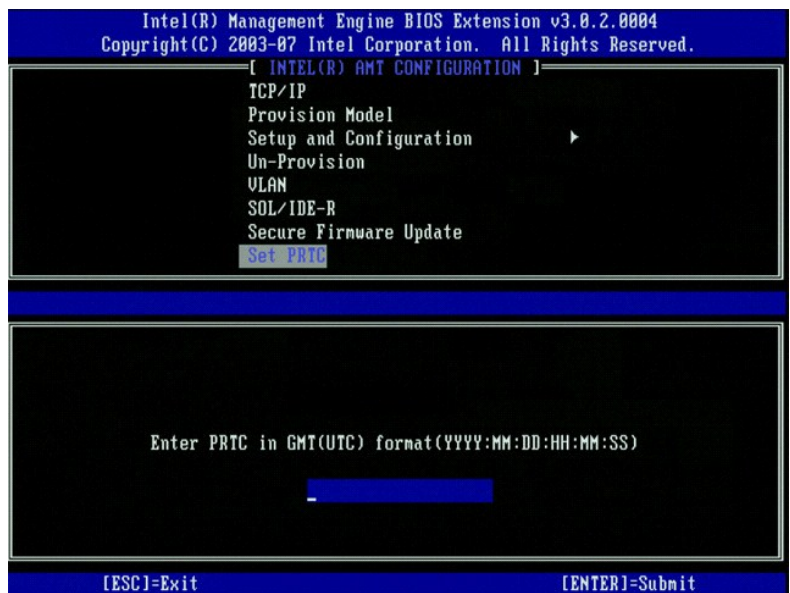








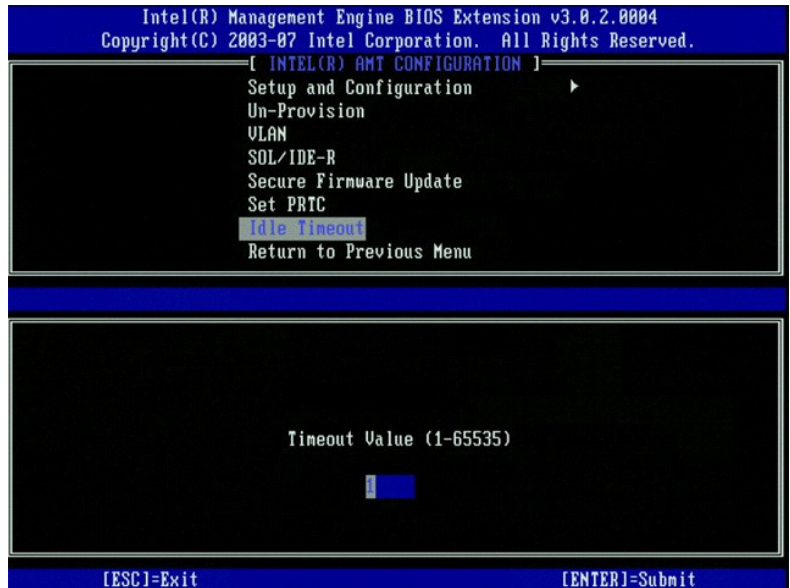
.Set PRTC N/A 92.



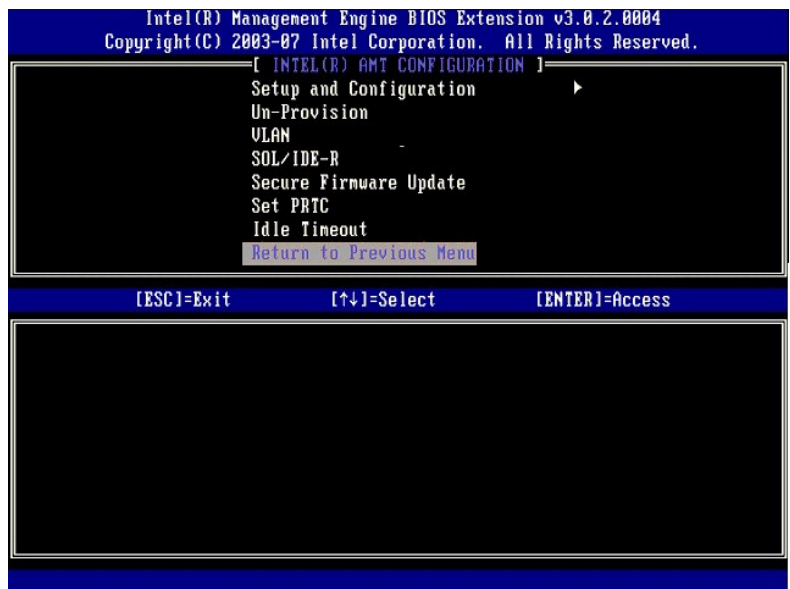
N-00000000, ME -P0N G0N0N N 13 0N0 "0K WoL -P0 0n \$ Rs00 0" 0W" sTP .1 00N N0"0N 00 00n .(-N00)PT-"N0W" sTP) Idle Timeout 00N 0000 -P0n 03.  
0000

.13 0N0 Desktop: ON in S0 00000 W 0N 0 ,W0-TW-00)W0 E-Star-W00N0,-W0 00n :0000 0000





.<Enter> \$p.(Rsn-\$p @Pn p"") Return to Previous Menu "0 13.



.<Enter> \$p.(r00) Exit "0 23.





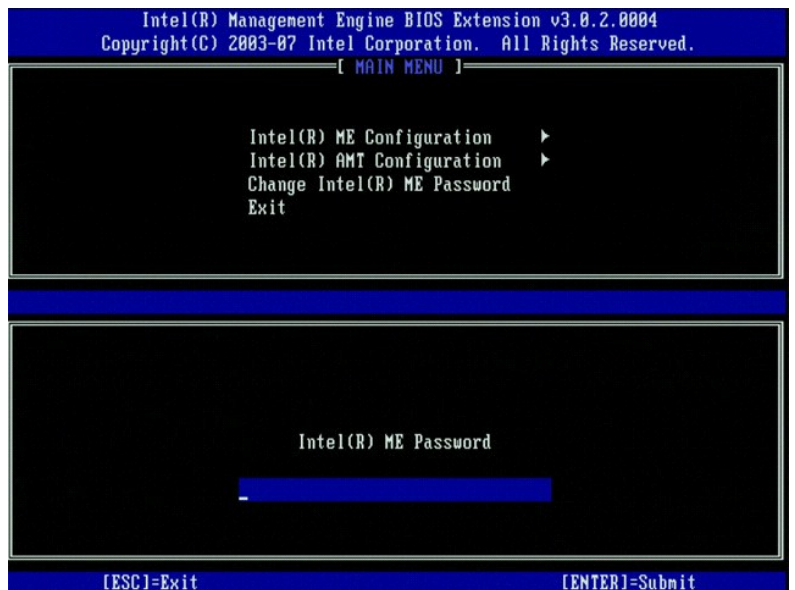


1. Press **Ctrl+P** to enter the BIOS Setup.



2. Press **Enter** to enter the Intel ME Password Setup.

3. Press **Enter** to enter the Intel ME Password Setup.



4. Press **Enter** to enter the Intel ME Password Setup.

5. Press **Enter** to enter the Intel ME Password Setup.

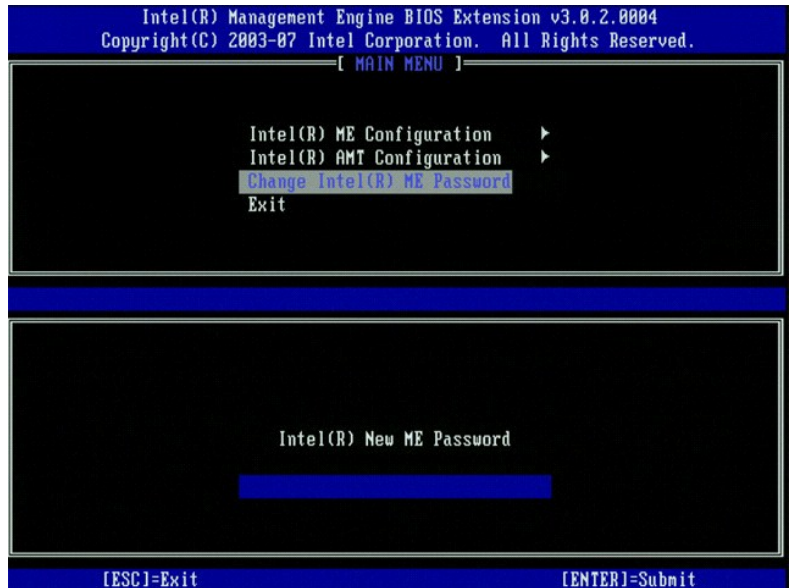
6. Press **Enter** to enter the Intel ME Password Setup.

7. Press **Enter** to enter the Intel ME Password Setup.

8. Press **Enter** to enter the Intel ME Password Setup.

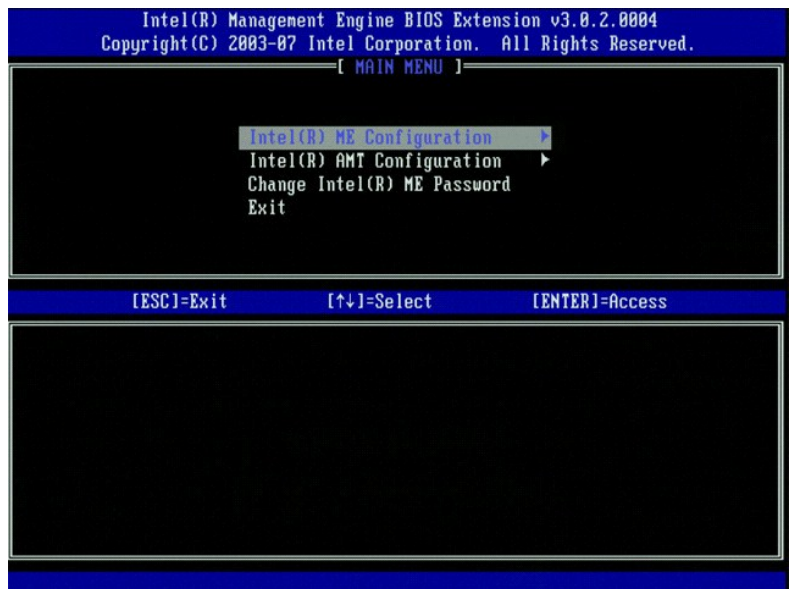
9. Press **Enter** to enter the Intel ME Password Setup.





.<Enter> \$n.(Intel ME נ p-ב דקזס) Intel ME Configuration "0 4.

.W-n-p-s-w-m/n-n-n,WW" m0B-0-Pa w-on ,ME -K-m נ p-ב n א דק-סנ PəW (ME W-PēNP נ p-ב דקזס) ME Platform Configuration



:דקזס-תצורה-מ 5.

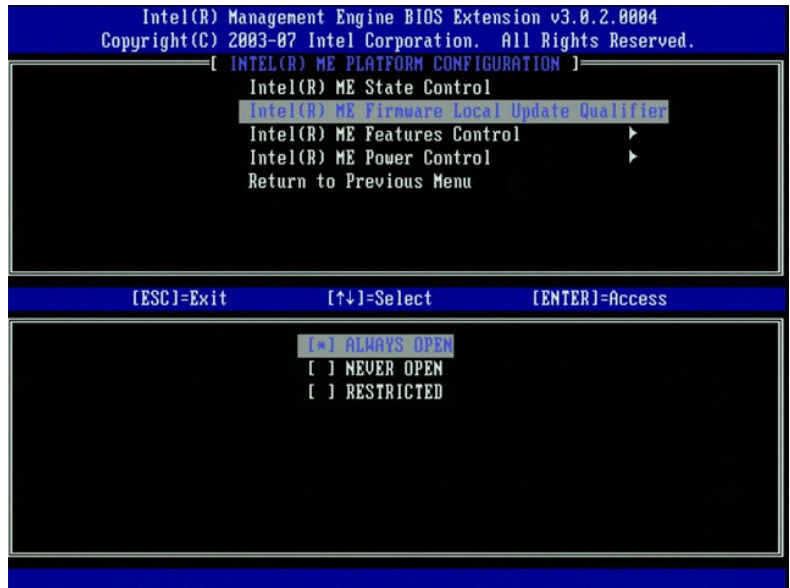
System resets after configuration change. Continue (Y/N).  
(המערכת תאופס לאחר שינוי תצורה. המשך (כ/ל).)

.<y> \$n

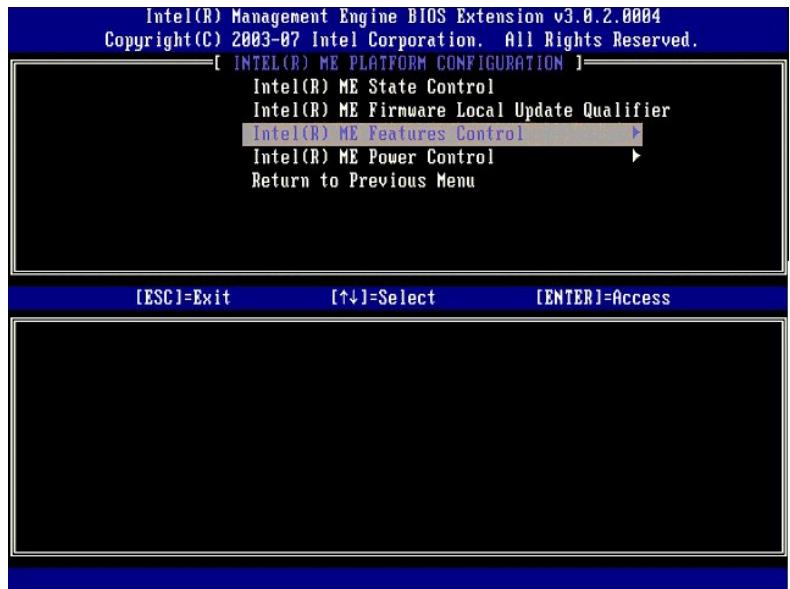








.<Enter> \$p.(Intel ME N -K-m \$Θ) Intel ME Features Control "Θ 9.



-PəΘ 1℄"Θ .Intel AMT ə℄n Nη"Wη ℄Θ ηΘη .1W-PəNη NN-1℄Kη ΘW1,1,Θ-s-"1K-m.(N-1℄K-N-m℄K-m℄"Θ) Manageability Feature Selection ə℄n pəΘη -Pəη 01.  
..s-WN-1℄Kη-N-m℄NəNKW (əN) None



```

[ INTEL(R) ME FEATURES CONTROL ]
Manageability Feature Selection
Return to Previous Menu

[ESC]=Exit      [↑↓]=Select      [ENTER]=Access

[ ] NONE
[*] Intel(R) AMT
[ ] ASF

```

Intel(R) Management Engine BIOS Extension v3.0.2.0004  
Copyright(C) 2003-07 Intel Corporation. All Rights Reserved.

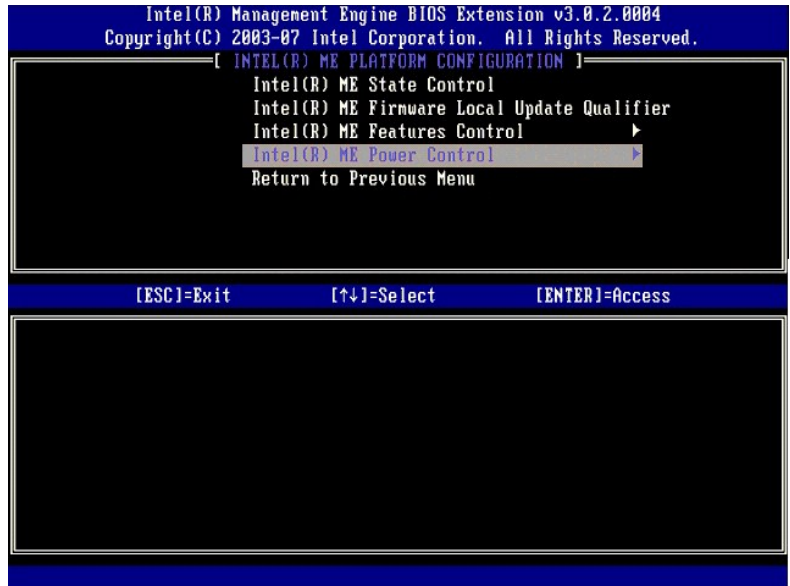
[ INTEL(R) ME FEATURES CONTROL ]

Manageability Feature Selection  
Return to Previous Menu

[ESC]=Exit      [↑↓]=Select      [ENTER]=Access

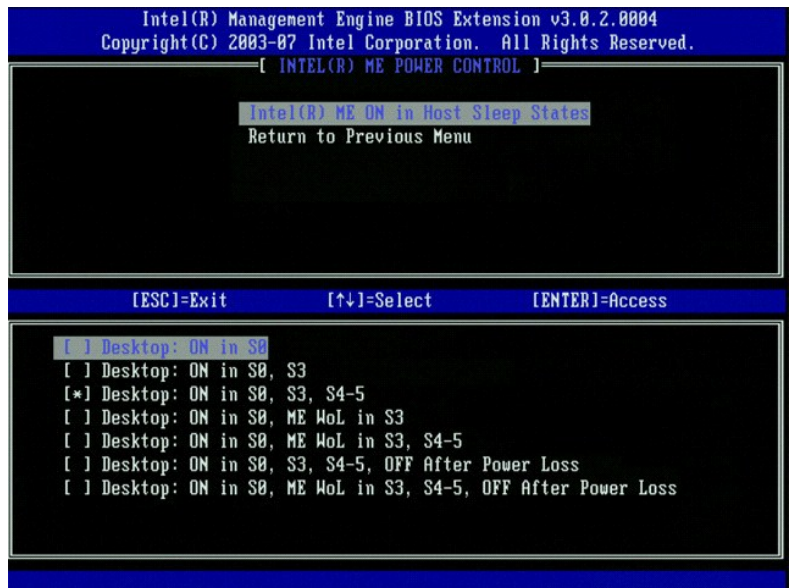
```
.<Enter> $n.(Intel ME N NW" $Θ) Intel ME Power Control "Θ 21.
```





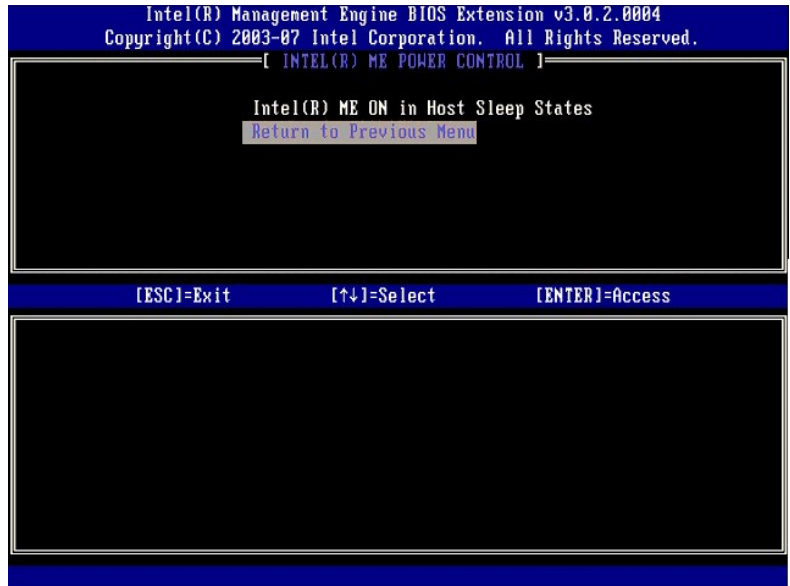
.Desktop: ON in S0, S3, S4-5 əƏn Nn" Wn ƏƏ ħən .("Wn NnK\ƏƏWƏN)P-W Intel ME) Intel ME ON in Host Sleep States əƏn nəƏn -Pən 31.

.(S0 -ƏƏW :n-ƏƏn) Desktop: ON in S0 nƏn Nn" Wn ƏƏ ħən ,n-WK-W"nƏƏ E-Star N-WŁ-TW —Ə-ƏŁ, :nƏn

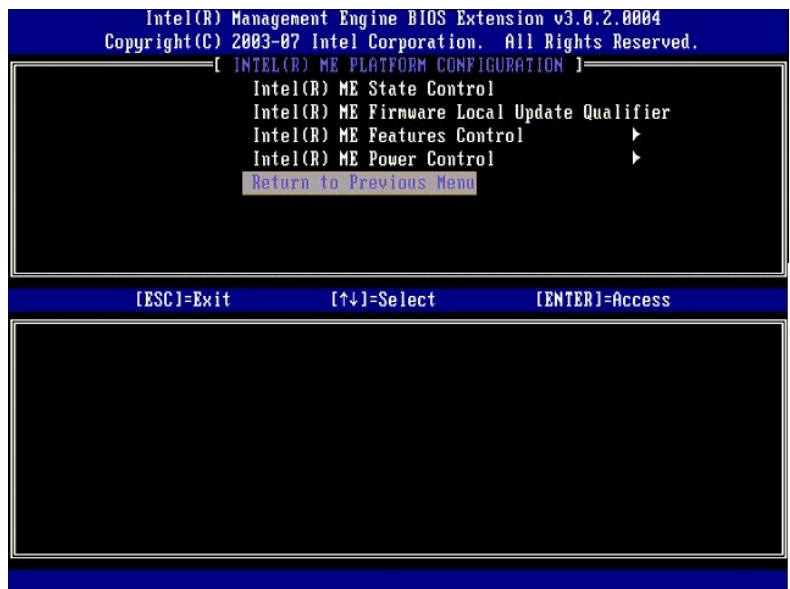


.<Enter> şp.(Rsq-şp ƏƏPN n"") Return to Previous Menu "Ə 41.





.<Enter> \$ p .(Rsn-\$p €@Pn p"" Return to Previous Menu "0 51.

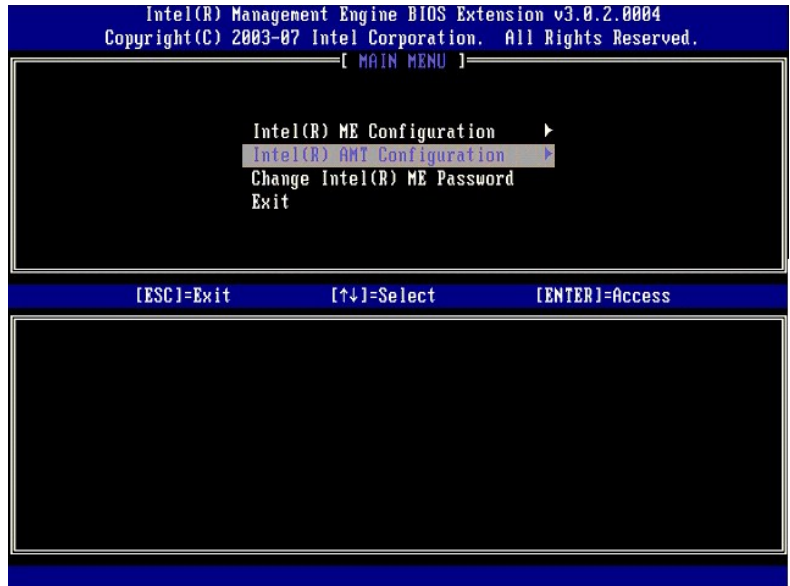


Wn Rs0, j1Wn0p0p0BOWWEN- (pWn-p Intel ME N p-B 0p0s) Intel ME Configuration Complete p0p-pn000W0Wn .ME -B 0 -W- MEBx 00pW 0B 61.  
 .Intel AMT -00p N p-B0 0p-0sN G-P00 ,ME N p-B0 0p0s

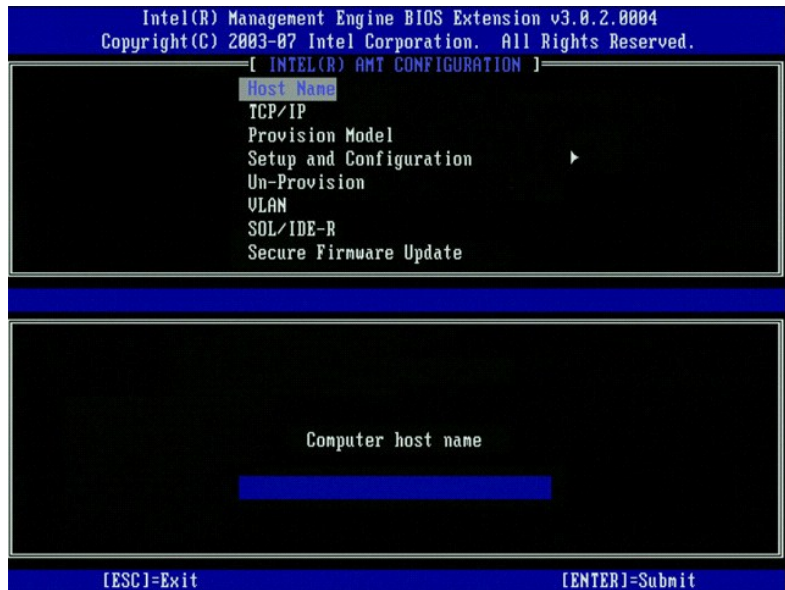
## SMBOW Intel AMT -Pa :Intel AMT N p-B 0p0s

:Rs0Rs00p00 000W-P0P0 Intel AMT N p-B0 0p0s -00p 0 PaN 0p0p  
 .MEBxRs00000000 <Ctrl><p> \$ p ,00W Dell N-0-Np 0TW0m ,N-0p 000p 000W0- 0W0p 0 N0p0 1.  
 .p0p0p Intel ME W00T 0 00p .pW00T000W0p0p0p00P-W 2.  
 .<Enter> \$ p .(Intel ME N p-B 0p0s) Intel AMT Configuration "0 3.





4. .<Enter> \$n. ("aW Rs) Host Name "0  
 5. .<Enter> \$n. " Intel AMT 0W-00, 01-"00 Rs n, 0W-01  
 .IP -p0-m000WnRs-00Nn0,0"Wn N IP -n 0-m0 Rs-sW0 "aW -W0 WnN 00K .0 N-Pn "aW Rs 00a 0n- .Rs- N-NnN-00-K0aWnRs



6. .<Enter> \$n.TCP/IP "0  
 7. :p00nW0K0-BWn0-p0000W-n00P-W p00n00n-0n  
 Disable Network Interface: (Y/N) 1  
 ((N7/10) :נסרל חמשק רשת)  
 .<n> \$n  
 .n0-Pn0m00Rs0,00n-p00-n00n00000-000W--n -P0 0n-".--n 00K0a TCP/IP-n0n- -N0-KW --s"-Wn Intel AMT -nN-00Nn,N0-KW n Rs0



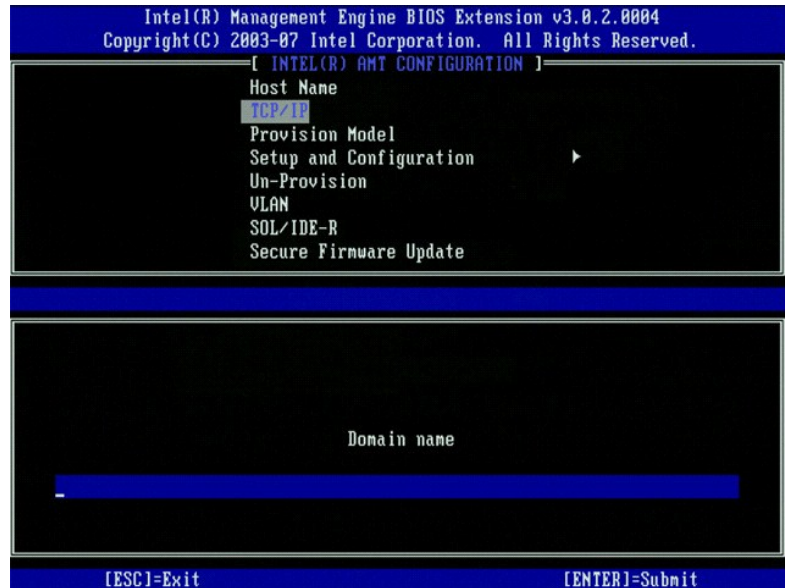


[DHCP Enable] Disable DHCP (Y/N) |  
.<n> \$p



(010000) Domain Name |  
..nq0 Rs-~"n Rs ə nN\$T

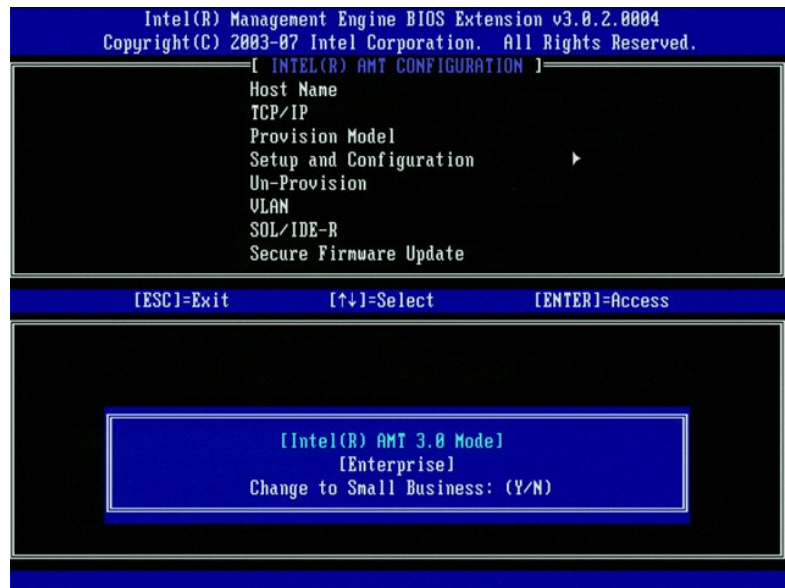




8. Provision Model "Θ", %PnW  
9. :04P-תשנ"ח

1 [Intel (R) AMT 3.0 Mode] [Enterprise] change to Small Business: (Y/N) 1  
2 ((מציב 3.0 AMT (R) Intel [ארגוני] החלק לעסק קטן: (כן/לא))

3. <y> \$n



01. Un-Provision -PnW, eNq  
11. .<Enter> \$n.VLAN "Θ", %PnW  
21. :04P-תשנ"ח

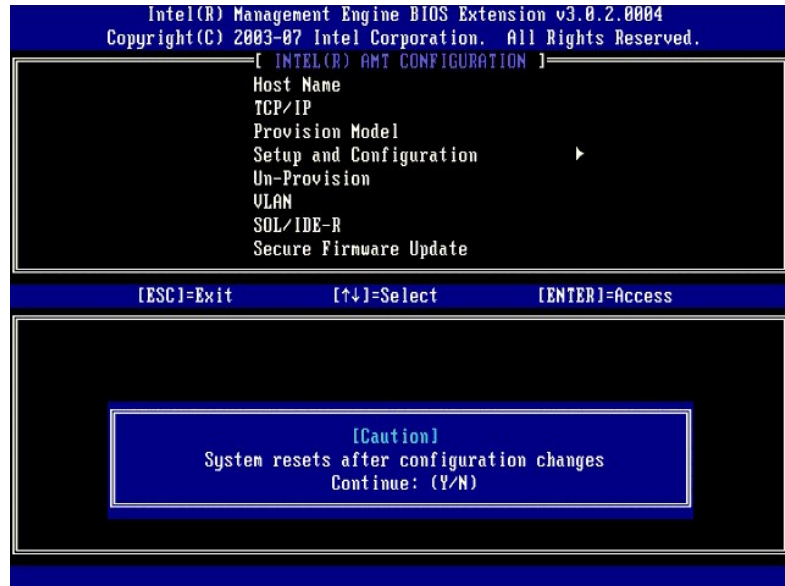
1 [VLAN Disabled] Enable VLAN: (Y/N)

2. <n> \$n





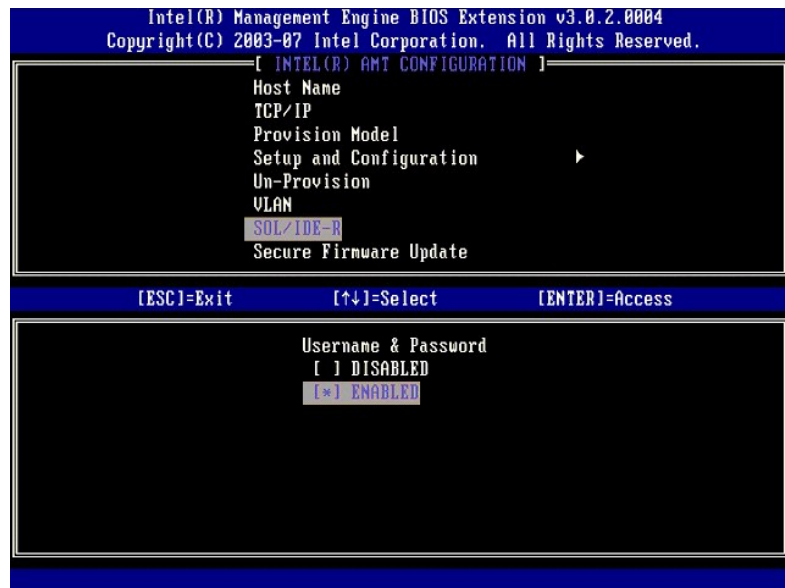




1 User name & Password (שם משתמש וסיסמה)

0 "Enabled (P-aW) mWn s q t > Enter.<

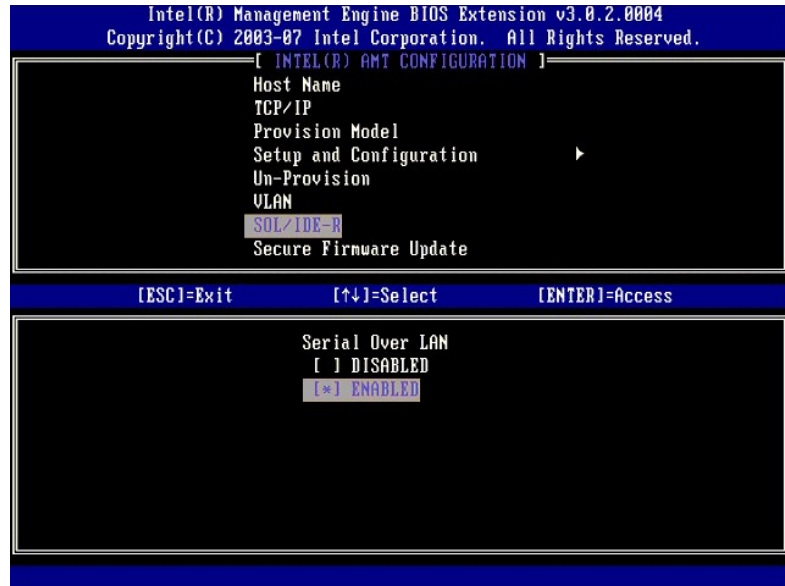
Pa -P aW n t -T W R s -T W a -P a R s .WebGUI -P aW n t -T W R s -T W a -P a R s .MEBx -P aW n t -T W R s -T W a -P a R s



1 Serial Over LAN (טורי של פני רשת מקומית)

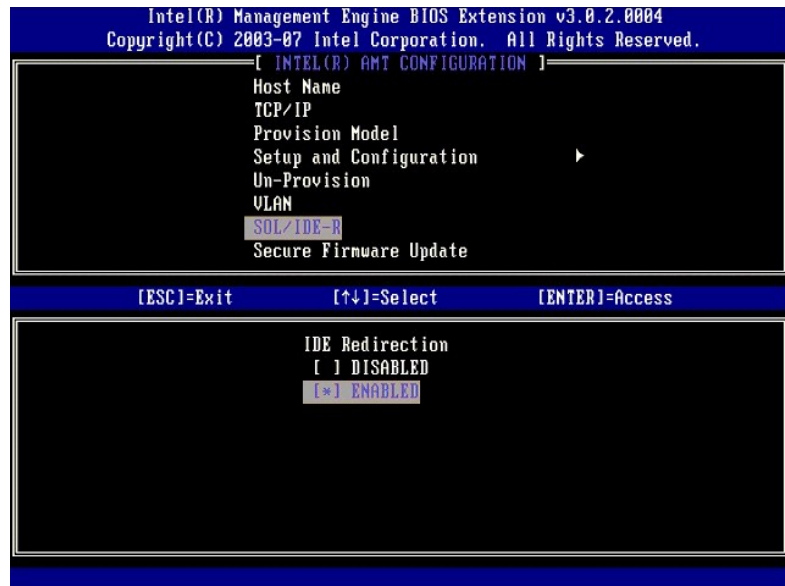
0 "Enabled (P-aW) mWn s q t > Enter.<





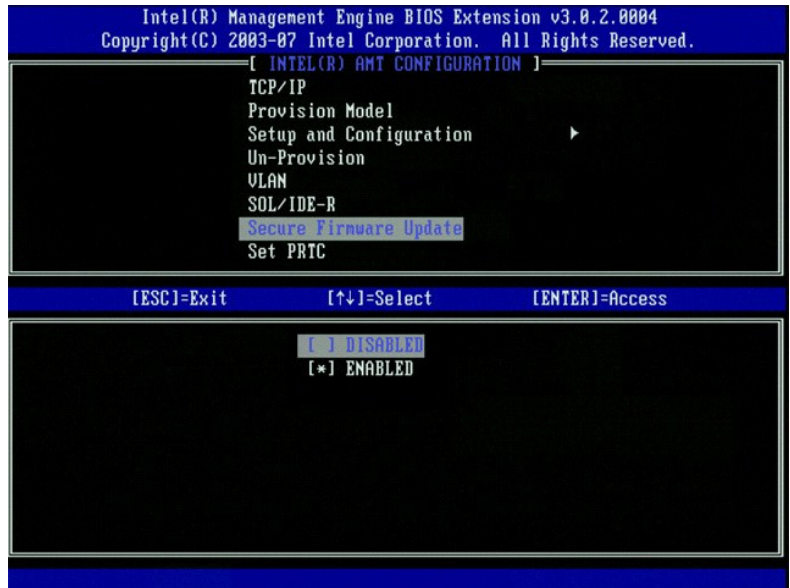
1 IDE Redirection (ניתוב מחדש של IDE)

Θ "Enabled (P-aW) מ"א-שן <Enter>.

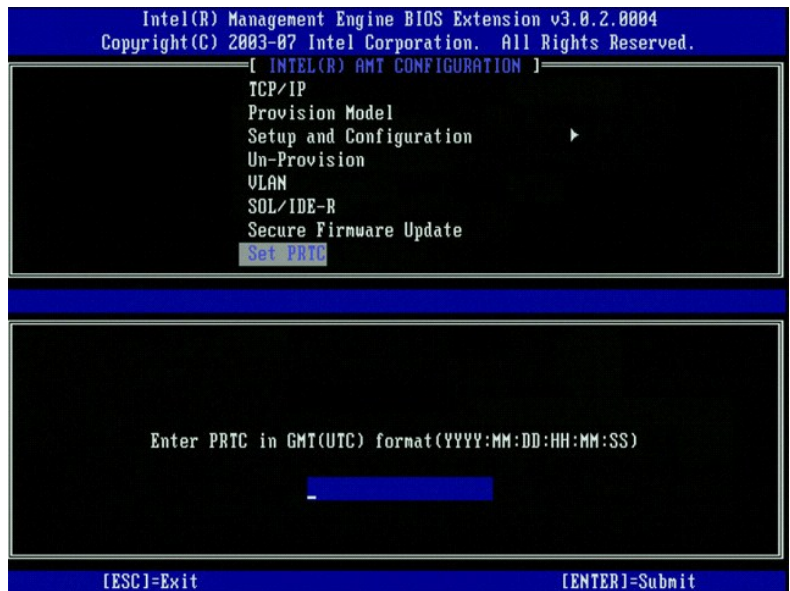


51. -P-aW Secure Firmware Update מ"א-שן (P-aW) Enabled מ"א-שן <Enter>.





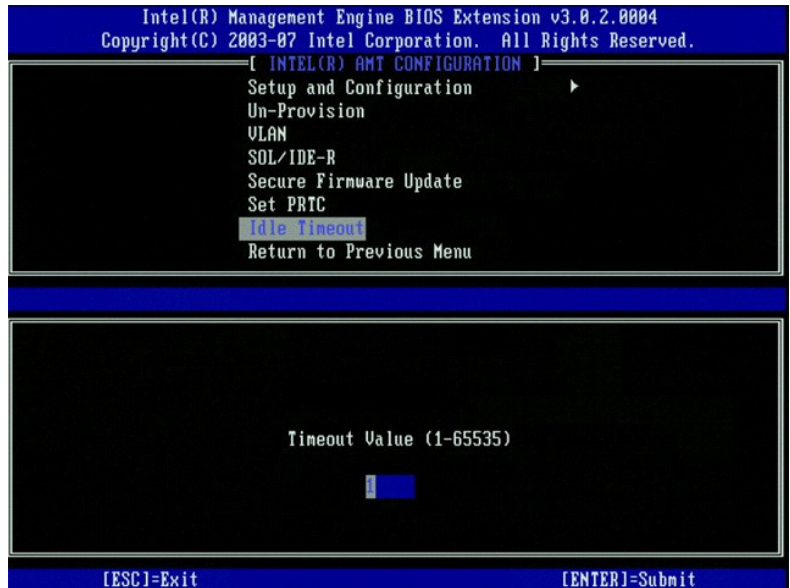
.Set PRTC N/A 61.



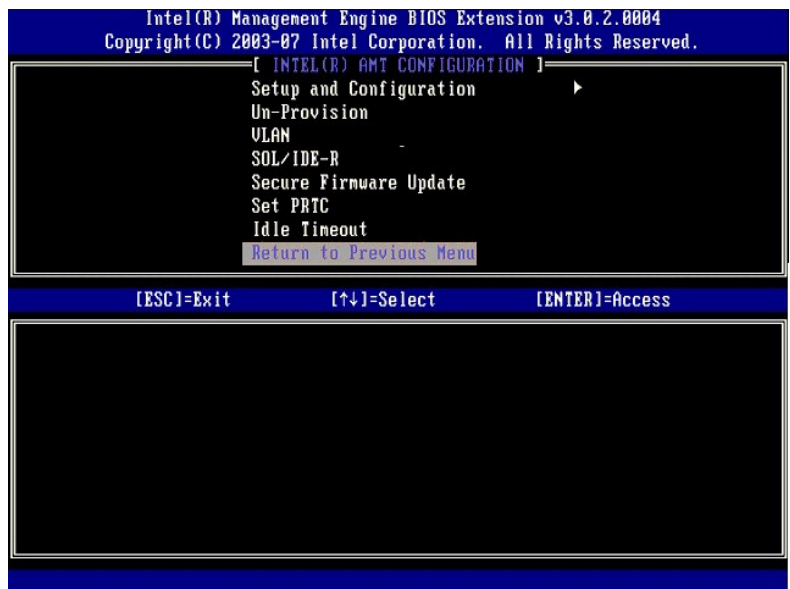
N-00000000, ME -P0N G0N0N N 13 0N0 "0K WoL -P0 0m \$ Rs00 0" 0W" sTP .1 000 N0W0 00 000 .(N00PT-"N0W" sTP) Idle Timeout 000 p000 -P00 71.  
.SMB

.13 0N0 Desktop: ON in SO 0000 W 0N 0, W0-TW-00, W0 E-Star-W00N0, W0000 :0000 00



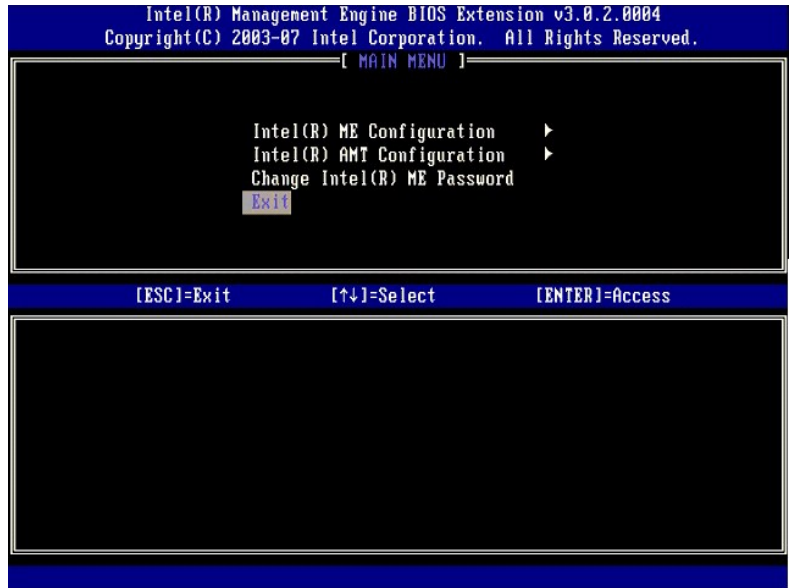


.<Enter> \$p.(Rsn-\$p @Pn p"") Return to Previous Menu "0 81.



.<Enter> \$p.(r00) Exit "0 91.





02. :00-00-00-00-00-00

Are you sure you want to exit? (Y/N):  
((האם אתה בטוח שברצונך לצאת? (כן/לא))

.<y> \$n





- .Intel® AMT N n-Bn D p Q s e - Q p e N ns w e - Q p e n-P N R s Q T F T e R s Q n P T W a W n" x Q p f

.(nsPTa-0) Un-Provision - Pañ- Intel AMT Configuration Cwñ-0Bw0 Intel AMT N n-0 0,00s- nññ 0""W N nsPTa-0)0CññK .nsPTa-0am Rse 0-nññNñ""Wñññ""

(NW-PT-6) Full Un-provision "Θ" NW-PT-6) Un-Provision "Θ" 1.

[illegible]

- [illegible]

MEBx <del>N N</del> <del>"W C</del> - <del>n</del>	
<del>N</del> <del>"W C</del> <del>n</del>	MEBx - <del>n</del>
P- <del>a</del> <del>W</del>	Intel ME State Control
( <del>n</del> <del>C</del> <del>W "</del> -P) Always Open	Intel ME Firmware Local Update Qualifier
P- <del>a</del> <del>W</del>	LAN s <del>0</del>
Intel ME Features Control	
Intel AMT	Manageability Feature Selection
Intel ME Power Control	
Desktop: ON in S0, S3, S4-5	ME On in Host Sleep States
SOL/IDE-R	
P- <del>a</del> <del>W</del>	( <del>n</del> <del>WT</del> <del>C</del> T- W <del>W</del> Rs) Username and Password
P- <del>a</del> <del>W</del>	Serial Over LAN
P- <del>a</del> <del>W</del>	(IDE <del>N</del> <del>n</del> <del>"W</del> <del>0-</del> <del>C</del> K) IDE Redirection
P- <del>a</del> <del>W</del>	Remote Firmware Update

[illegible]

.support.dell.com əθ nɪ-pN ɪŋw" n"-s N Flash .Ks-wN pTɛnW -ŋ pKŋ pTɛn n"-sN N Flash ʤɛnŋKəN

:-N-Rs/ON/00,SOL -0 IDE-R -0 Wn "ZNBW GKZa Rsæ

- ```

.MEBX<Ctrl><p> $n,OK-on N-"an CTWΘ 1.
.n"n Intel ME WTCFΘn.nWTCTnesWn n n n P-W 2.
.(Intel ME n-B D.CEs) Intel AMT Configuration "Θ 3.

```



.<Enter> \$n 4.  
.(n\$PTa-0) Un-Provision "0 5.  
.<Enter> \$n 6.  
.(n\$PTa-0) Full Unprovision "0 7.  
.<Enter> \$n 8.  
.Intel AMT Configuration [GAG](#) -qerr N p-Bp a q" W 4s 9.



ገጠላ-ብ ጸብቶ ገጠጠ